

153.09

153.11

153.10

153.14

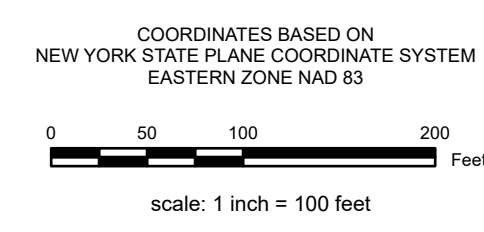
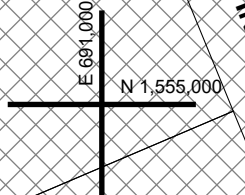
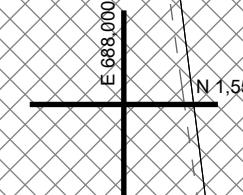
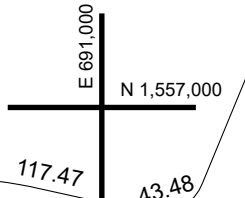
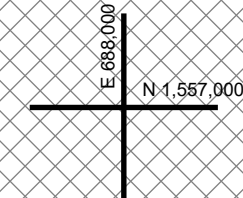
153.13

153.00

153.15

153.18

153.19



SPECIAL DISTRICTS	
AG: GREENFIELD FIRE DIST. F0006	LAKE:
SCHOOL: SARATOGA SPRINGS CENTRAL 411000	WATER: COUNTY SEWER DIST #1 50010
LIGHT:	PARK:

PROPERTY LINE	
	BLOCK LIMIT
	SECTION LIMIT
	TOWN/VILLAGE/CITY
	COUNTY LINE
	RAILROAD

LEGEND	
	GREAT LOT LINE
	SUBDIVISION LOT LINE
	STATE ROUTE
	COUNTY ROUTE
	STREET OR TOWN ROAD
	SCHOOL DISTRICT LINE
	FIRE DISTRICT LINE
	WATER DISTRICT LINE
	AGRICULTURAL DISTRICT
	LIGHT DISTRICT
	NAD 83 TIC LINES
	TAX MAP BLOCK NUMBER
	FILED PLAN LOT NUMBER
	TAX MAP PARCEL NUMBER
	STREAM/WATERBODY
	9.8.A (C)
	8.8.A
	150.2
	150.0-3.9
	153.00
	153.13
	153.17
	153.18
	153.19

GREAT LOT NUMBER	
	153.00
	153.13
	153.17
	153.18
	153.19

CALCULATED ACRES	
	9.8.A (C)
	8.8.A
	150.2
	150.0-3.9
	153.00
	153.13
	153.17
	153.18
	153.19

SHEET INDEX	
	153.00
	153.13
	153.17
	153.18
	153.19

TAX MAP 153.14

TOWN OF WILTON
SARATOGA COUNTY, NEW YORK

TAXABLE STATUS DATE: March 1, 2028 MAP EXPORTED ON: March 19, 2028

REAL PROPERTY TAX MAP
SARATOGA COUNTY BOARD OF SUPERVISORS
UNDER SUPERVISION OF: REAL PROPERTY TAX SERVICE AGENCY

PREPARED BY:
L. ROBERT KIMBALL CONSULTING ENGINEERS, EBERSBURG, PA (1973-1978)
CONVERTED TO DIGITAL FORMAT BY THE L.A. GROUP SARATOGA SPRINGS, NY (1986-1998)
CONVERTED TO DIGITAL FORMAT FROM NAD 27 TO NAD 83 BY WILSON MAPING, INC. (2002)
CONVERTED TO ESRI GDB/DATABASE FORMAT BY FOUNTAINS SPATIAL, INC. (2007-2008)

THIS MAP HAS BEEN PREPARED FROM MAPS AND DEEDS AND OTHER INFORMATION OF PUBLIC RECORD. IN ACCORDANCE WITH THE PROVISIONS OF THE REAL PROPERTY TAX LAW, FOR ASSESSMENT PURPOSES ONLY.
IT DOES NOT REPRESENT A LAND SURVEY AND MUST NOT BE CONSTRUED AS SUCH.
DESCRIPTIONS OF REAL PROPERTY TAKEN HEREFROM FOR THE PURPOSE OF CONVEYANCE OR TRANSFER, MUST BE LIMITED TO THOSE NECESSARY AND INCIDENTAL TO THE ADMINISTRATION OF THE REAL PROPERTY TAX LAW.