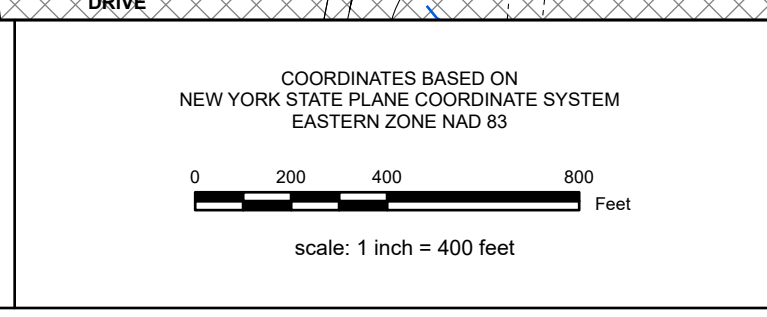


REAL PROPERTY TAX MAP
 PREPARED FOR: SARATOGA COUNTY BOARD OF SUPERVISORS
 UNDER SUPERVISION OF: REAL PROPERTY TAX SERVICE AGENCY
 PREPARED BY:
 L. ROBERT KIMBALL CONSULTING ENGINEERS, ERIENSBURG, PA (1973-1978)
 CONVERTED TO DIGITAL FORMAT BY THE L.A. GROUP SARATOGA SPRINGS, NY (1998-1999)
 CONVERTED TO DIGITAL FORMAT FROM NAD 27 TO NAD 83 BY WILSON MAPPING, INC. (2002)
 CONVERTED TO ESRI GDB/DATABASE FORMAT BY FOUNTAINS SPATIAL, INC. (2007-2008)

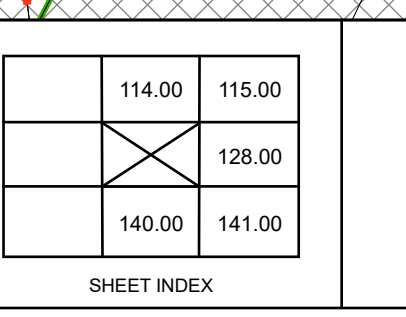
THIS MAP HAS BEEN PREPARED FROM MAPS AND DEEDS AND OTHER INFORMATION OF PUBLIC RECORD. IN ACCORDANCE WITH THE PROVISIONS OF THE REAL PROPERTY TAX LAW, FOR ASSESSMENT PURPOSES ONLY.
 IT DOES NOT REPRESENT A LAND SURVEY AND MUST NOT BE CONSTRUED AS SUCH.
 DESCRIPTIONS OF REAL PROPERTY TAKEN HEREFROM FOR THE PURPOSE OF CONVEYANCE OR TRANSFER, MUST BE LIMITED TO THOSE NECESSARY AND INCIDENTAL TO THE ADMINISTRATION OF THE REAL PROPERTY TAX LAW.



SPECIAL DISTRICTS	
AGE	LAKE
FIRE: WILTON FIRE ROOM	WATER:
SCHOOL: SARATOGA SPRINGS CENTRAL (41200) SOUTH GAIN HILLS CENTRAL (41945)	SEWER: COUNTY SEWER (SE3) COUNTY SEWER CORP. (SE3)
LIGHT:	PARK:

PROPERTY LINE	
BLOCK LIMIT	GREAT LOT LINE
SECTION LIMIT	SUBDIVISION LOT LINE
TOWN/VILLAGE/CITY	STATE ROUTE
COUNTY LINE	COUNTY ROUTE
RAILROAD	STREET OR TOWN ROAD

LEGEND	
SCHOOL DISTRICT LINE	DEED ACRES
FIRE DISTRICT LINE	DEED ACRES
WATER DISTRICT LINE	DEED ACRES
AGRICULTURAL DISTRICT	DEED ACRES
LIGHT DISTRICT	DEED ACRES
NAD 83 TIC LINES	DEED ACRES
GREAT LOT NUMBER	8.8 A (C)
TAX MAP BLOCK NUMBER	8.8 A
FILED PLAN LOT NUMBER	150 (S)
TAX MAP PARCEL NUMBER	150.2
STREAM/WATERBODY	160.00-3.9
DENOTES COMMON OWNER	



TAX MAP 127.00
TOWN OF WILTON
 SARATOGA COUNTY, NEW YORK
 TAXABLE STATUS DATE: March 1, 2028
 MAP EXPORTED ON: March 19, 2028