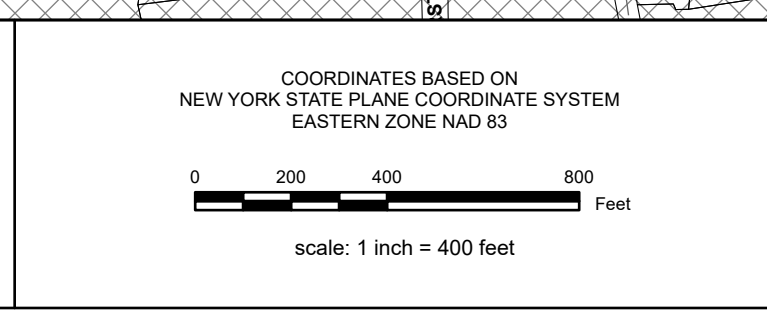


REAL PROPERTY TAX MAP
 PREPARED FOR: SARATOGA COUNTY BOARD OF SUPERVISORS
 UNDER SUPERVISION OF: REAL PROPERTY TAX SERVICE AGENCY
 PREPARED BY:
 L. ROBERT KIMBALL CONSULTING ENGINEERS, ERIENSBURG, PA (1973-1978)
 CONVERTED TO DIGITAL FORMAT BY THE L.A. GROUP SARATOGA SPRINGS, NY (1998-1999)
 CONVERTED TO DIGITAL FORMAT FROM NAD 27 TO NAD 83 BY WILSON MAPPING, INC. (2002)
 CONVERTED TO ESRI GEODATABASE FORMAT BY FOUNTAINS SPATIAL, INC. (2007-2008)

THIS MAP HAS BEEN PREPARED FROM MAPS AND DEEDS AND OTHER INFORMATION OF PUBLIC RECORD. IN ACCORDANCE WITH THE PROVISIONS OF THE REAL PROPERTY TAX LAW, FOR ASSESSMENT PURPOSES ONLY.
 IT DOES NOT REPRESENT A LAND SURVEY AND MUST NOT BE CONSTRUED AS SUCH.
 DESCRIPTIONS OF REAL PROPERTY TAKEN HEREFROM FOR THE PURPOSE OF CONVEYANCE OR TRANSFER, MUST BE LIMITED TO THOSE NECESSARY AND INCIDENTAL TO THE ADMINISTRATION OF THE REAL PROPERTY TAX LAW.



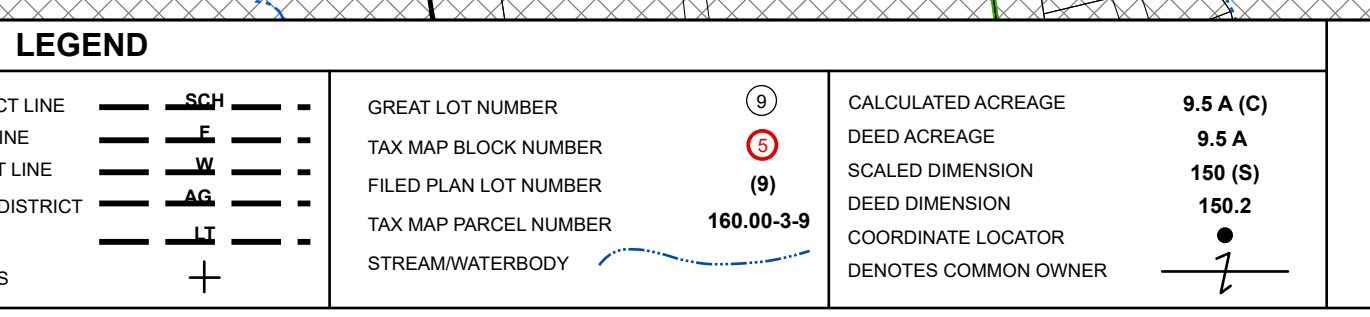
SPECIAL DISTRICTS

AG:	LAKE:
FIRE: WILTON FIRE - FD06	WATER:
SCHOOL: SARATOGA SPRINGS CENTRAL 411000	SEWER: COUNTY SEWER SE03 COUNTY SEWER CORP. SE33
LIGHT:	PARK:

PROPERTY LINE
 BLOCK LIMIT
 SECTION LIMIT
 TOWN/VILLAGE/CITY
 COUNTY LINE
 RAILROAD

LEGEND

GREAT LOT LINE	SCHOOL DISTRICT LINE	GREAT LOT NUMBER	CALCULATED ACREAGE
SUBDIVISION LOT LINE	FIRE DISTRICT LINE	TAX MAP BLOCK NUMBER	DEED ACREAGE
STATE ROUTE	WATER DISTRICT LINE	FILED PLAN LOT NUMBER	SCALED DIMENSION
COUNTY ROUTE	AGRICULTURAL DISTRICT	TAX MAP PARCEL NUMBER	DEED DIMENSION
STREET OR TOWN ROAD	LIGHT DISTRICT	160.00-3.9	COORDINATE LOCATOR
	NAD 83 B.T.C. LINES		DENOTES COMMON OWNER



TOWN OF WILTON
 SARATOGA COUNTY, NEW YORK
 TAXABLE STATUS DATE: March 1, 2028
 MAP EXPORTED ON: March 19, 2028