

REAL PROPERTY TAX MAP

PREPARED FOR: SARATOGA COUNTY BOARD OF SUPERVISORS
UNDER SUPERVISION OF: REAL PROPERTY TAX SERVICE AGENCY

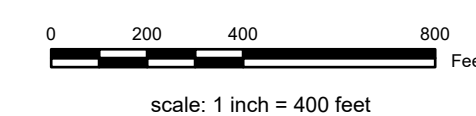
PREPARED BY:
L. ROBERT KIMBALL CONSULTING ENGINEERS, ERIENSBURG, PA (1973-1978)
CONVERTED TO DIGITAL FORMAT BY THE L.A. GROUP SARATOGA SPRINGS, NY (1986-1998)
CONVERTED TO DIGITAL FORMAT FROM NAD 27 TO NAD 83 BY WILSON MAPPING, INC. (2002)
CONVERTED TO ESRI GEODATABASE FORMAT BY FOUNTAINS SPATIAL, INC. (2007-2008)

THIS MAP HAS BEEN PREPARED FROM MAPS AND DEEDS AND OTHER INFORMATION OF PUBLIC RECORD. IN ACCORDANCE WITH THE PROVISIONS OF THE REAL PROPERTY TAX LAW, FOR ASSESSMENT PURPOSES ONLY.

IT DOES NOT REPRESENT A LAND SURVEY AND MUST NOT BE CONSTRUED AS SUCH.

DESCRIPTIONS OF REAL PROPERTY TAKEN HEREFROM FOR THE PURPOSE OF CONVEYANCE OR TRANSFER, MUST BE LIMITED TO THOSE NECESSARY AND INCIDENTAL TO THE ADMINISTRATION OF THE REAL PROPERTY TAX LAW.

COORDINATES BASED ON
NEW YORK STATE PLANE COORDINATE SYSTEM
EASTERN ZONE NAD 83



SPECIAL DISTRICTS

AG: WILTON FIRE FD06	LAKE:
SCHOOL: CORINTH CENTRAL (1300) SOUTH GLEN HILLS CENTRAL (1495)	SEWER: COUNTY SEWER DIST #1 50010
LIGHT:	PARK:

PROPERTY LINE

BLOCK LIMIT	GREAT LOT LINE
SECTION LIMIT	SUBDIVISION LOT LINE
TOWN VILLAGE CITY	STATE ROUTE
COUNTY LINE	COUNTY ROUTE
RAILROAD	STREET OR TOWN ROAD

LEGEND

SCHOOL DISTRICT LINE	AG	GREAT LOT NUMBER	AG
FIRE DISTRICT LINE	W	TAX MAP BLOCK NUMBER	AG
WATER DISTRICT LINE	W	FILED PLAN LOT NUMBER	AG
AGRICULTURAL DISTRICT	AG	TAX MAP PARCEL NUMBER	AG
LIGHT DISTRICT	AG	STREAM WATERBODY	AG
NAD 83 TIC LINES	+		

LEGEND

100.00	102.00
114.00	115.00

SHEET INDEX

TAX MAP
TOWN OF WILTON
SARATOGA COUNTY, NEW YORK

101.00