

296.00
 1
 State of New York
 Peabees Island
 1.11
 150.22 A(C)

ALBANY COUNTY

ALBANY COUNTY

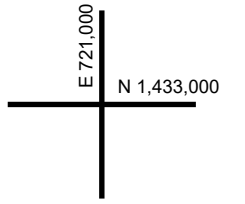
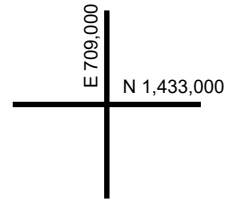
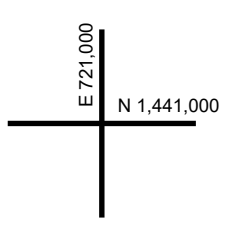
ALBANY COUNTY

MOHAWK

RIVER ALBANY

TOWN OF WATERFORD

TOWN OF WATERFORD



REAL PROPERTY TAX MAP

PREPARED FOR: SARATOGA COUNTY BOARD OF SUPERVISORS
 UNDER SUPERVISION OF: REAL PROPERTY TAX SERVICE AGENCY

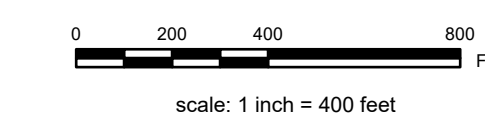
PREPARED BY:
 L. ROBERT KIMBALL CONSULTING ENGINEERS, EBENSBURG, PA (1973-1978)
 CONVERTED TO DIGITAL FORMAT BY THE L.A. GROUP SARATOGA SPRINGS, NY (1986-1998)
 CONVERTED TO DIGITAL FORMAT FROM NAD 27 TO NAD 83 BY WILDER-MAPPING, INC. (2002)
 CONVERTED TO ESRI GEODATABASE FORMAT BY FOUNTAINS SPATIAL, INC. (2007-2008)

THIS MAP HAS BEEN PREPARED FROM MAPS AND DEEDS AND OTHER INFORMATION OF PUBLIC RECORD. IN ACCORDANCE WITH THE PROVISIONS OF THE REAL PROPERTY TAX LAW, FOR ASSESSMENT PURPOSES ONLY.

IT DOES NOT REPRESENT A LAND SURVEY AND MUST NOT BE CONSTRUED AS SUCH.

DESCRIPTIONS OF REAL PROPERTY TAKEN HEREFROM FOR THE PURPOSE OF CONVEYANCE OR TRANSFER MUST BE LIMITED TO THOSE NECESSARY AND INCIDENTAL TO THE ADMINISTRATION OF THE REAL PROPERTY TAX LAW.

COORDINATES BASED ON
 NEW YORK STATE PLANE COORDINATE SYSTEM
 EASTERN ZONE NAD 83



SPECIAL DISTRICTS

SCHOOL: WATERFORD HALFPOON 45561	FIRE: NORTHSIDE FIRE FD004 FIRE PROTECTION #1 FD005
WATER: WATER BODIES W7019	LIGHT: MOHAWK LIGHT LT023 NORTHSIDE LIGHT LT024
AG:	SEWER:
LAKE:	PARK:

PROPERTY LINE	---
BLOCK LIMIT	---
SECTION LIMIT	---
TOWN/VILLAGE/CITY	---
COUNTY LINE	---
RAILROAD	---

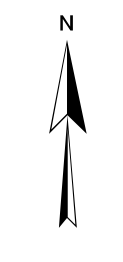
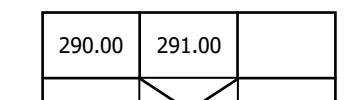
GREAT LOT LINE	---
SUBDIVISION LOT LINE	---
STATE ROUTE	(R)
COUNTY ROUTE	(R)
STREET OR TOWN ROAD	---
MAIN ST	---

LEGEND

SCHOOL DISTRICT LINE	---
FIRE DISTRICT LINE	---
WATER DISTRICT LINE	---
AGRICULTURAL DISTRICT	---
LIGHT DISTRICT	---
NAD 83 TIC LINES	---

GREAT LOT NUMBER	(1)
TAX MAP BLOCK NUMBER	(9)
FILED PLAN LOT NUMBER	(9)
TAX MAP PARCEL NUMBER	160.00-3-9
STREAM/WATERBODY	---

CALCULATED ACREAGE	296.00
DEED ACREAGE	295.00
SCALED DIMENSION	150.2
COORDINATE LOCATOR	---
IDENTIFIES COMMON OWNER	---



TAX MAP
TOWN OF WATERFORD
SARATOGA COUNTY, NEW YORK

296.00

TAXABLE STATUS DATE: March 1, 2028 MAP EXPORTED ON: March 11, 2028