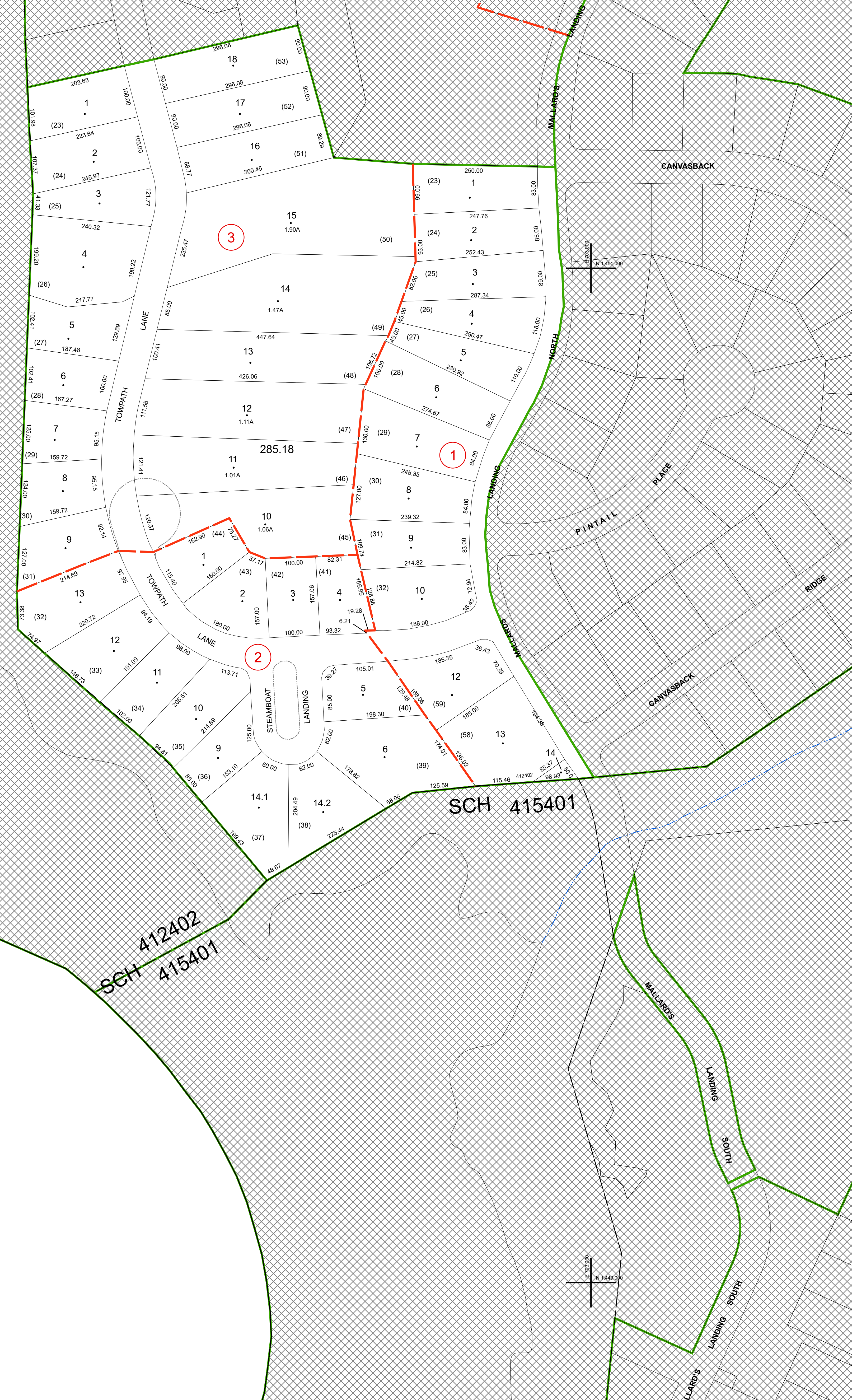


ALBANY COUNTY
MOHAWK RIVER

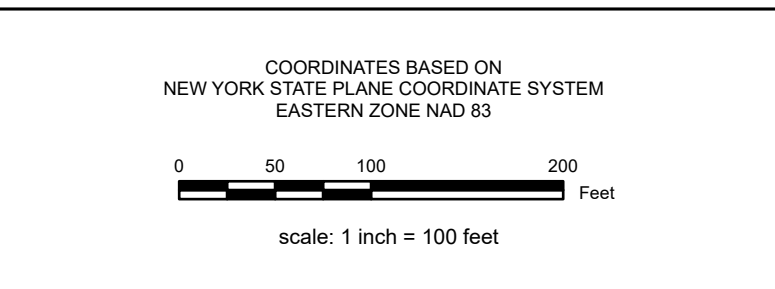


REAL PROPERTY TAX MAP
 PREPARED FOR: SARATOGA COUNTY BOARD OF SUPERVISORS
 UNDER SUPERVISION OF: REAL PROPERTY TAX SERVICE AGENCY

PREPARED BY:
 L. ROBERT KIMBALL CONSULTING ENGINEERS, EBENSBURG, PA (1973-1978)
 CONVERTED TO DIGITAL FORMAT BY THE L.A. GROUP SARATOGA SPRINGS, NY (1996-1998)
 CONVERTED TO DIGITAL FORMAT FROM NAD 27 TO NAD 83 BY WIELER-MAPPING, INC. (2002)
 CONVERTED TO ESRI GEODATABASE FORMAT BY FOUNTAINS SPATIAL, INC. (2007-2008)

THIS MAP HAS BEEN PREPARED FROM MAPS AND DEEDS AND OTHER INFORMATION OF PUBLIC RECORD. IN ACCORDANCE WITH THE PROVISIONS OF THE REAL PROPERTY TAX LAW, FOR ASSESSMENT PURPOSES ONLY.
 IT DOES NOT REPRESENT A LAND SURVEY AND MUST NOT BE CONSTRUED AS SUCH.

DESCRIPTIONS OF REAL PROPERTY TAKEN HEREFROM FOR THE PURPOSE OF CONVEYANCE OR TRANSFER MUST BE LIMITED TO THOSE NECESSARY AND INCIDENTAL TO THE ADMINISTRATION OF THE REAL PROPERTY TAX LAW.



SPECIAL DISTRICTS	
SCHOOL: SHENDEDEKWA 412402	FIRE: HALLOON-WATERFORD FIRE FD06
WATER: WATER BODIES W010	LIGHT:
AG:	SEWER:
LAKE:	PARK:

PROPERTY LINE		LEGEND	
BLOCK LIMIT	GREAT LOT LINE	SCHOOL DISTRICT LINE	FILED PLAN LOT NUMBER
SECTION LIMIT	SUBDIVISION LOT LINE	FIRE DISTRICT LINE	TAX MAP PARCEL NUMBER
TOWN/VILLAGE/CITY	STATE ROUTE	WATER DISTRICT LINE	STREAM/WATERBODY
COUNTY LINE	COUNTY ROUTE	AGRICULTURAL DISTRICT	
RAILROAD	STREET OR TOWN ROAD	LIGHT DISTRICT	
		NAD 83 TIC LINES	

CALCULATED ACREAGE	
285.00	285.14
285.00	285.19
285.00	285.07

SHEET INDEX

TAX MAP 285.18

TOWN OF WATERFORD
 SARATOGA COUNTY, NEW YORK

TAXABLE STATUS DATE: March 1, 2028 MAP EXPORTED ON: March 11, 2028