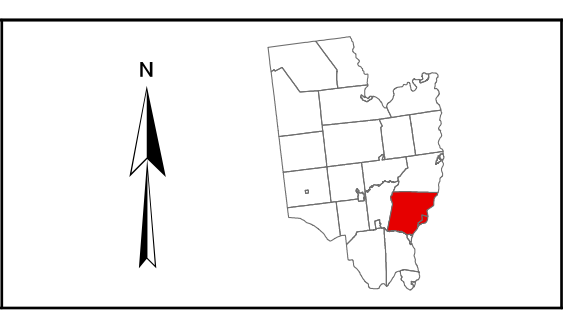
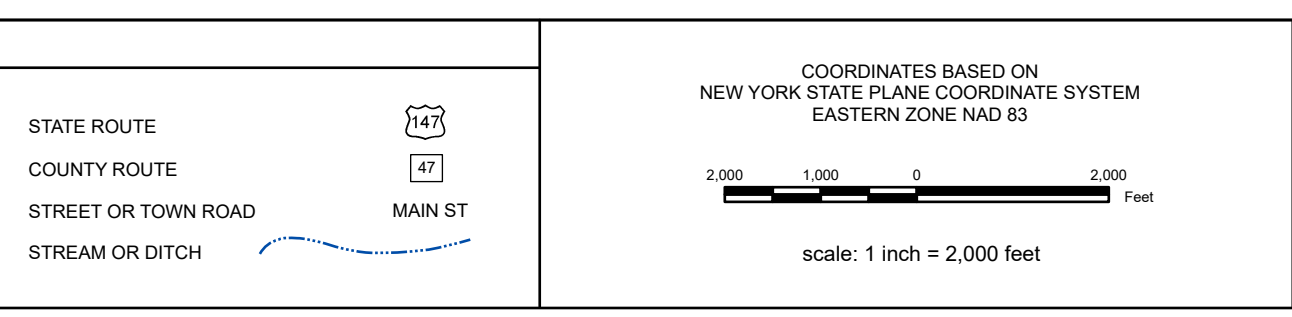
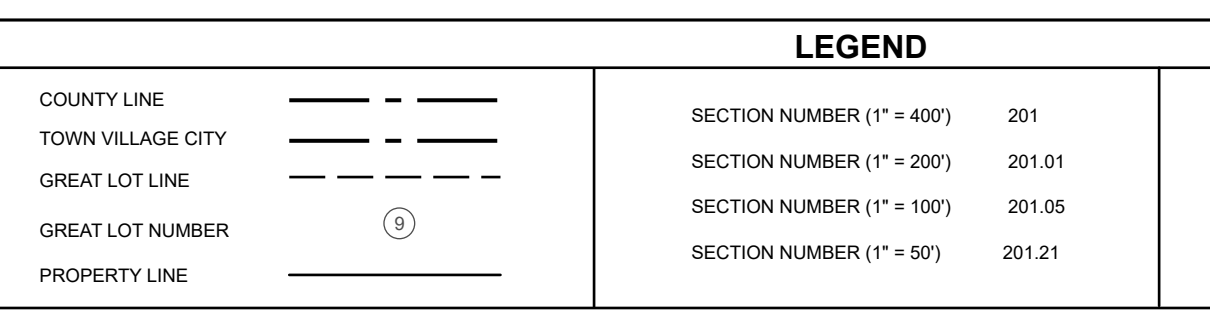
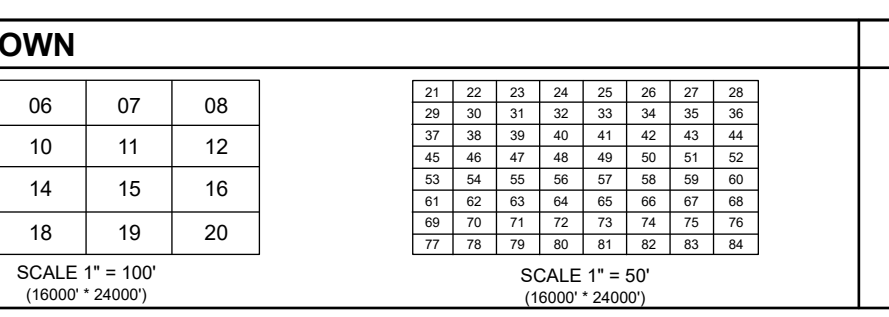
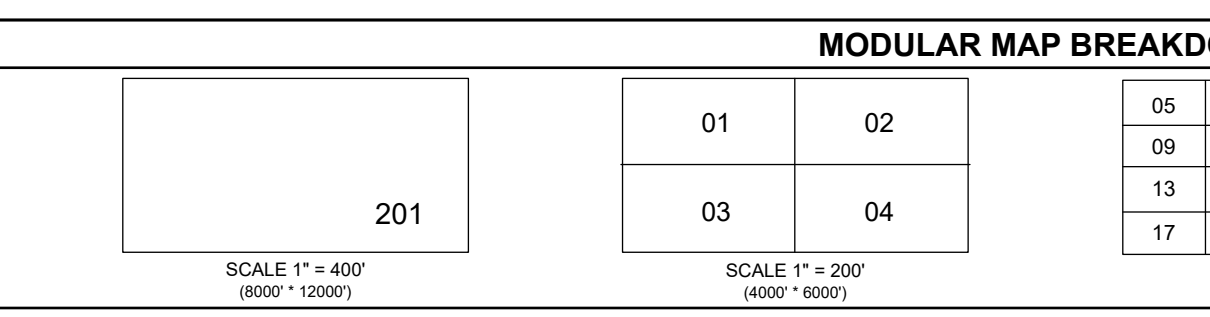




**REAL PROPERTY TAX MAP**  
 PREPARED FOR: SARATOGA COUNTY BOARD OF SUPERVISORS  
 UNDER SUPERVISION OF: REAL PROPERTY TAX SERVICE AGENCY  
 PREPARED BY: L. ROBERT KIMBALL CONSULTING ENGINEERS, ERENSBURG, PA (1973-1978)  
 CONVERTED TO DIGITAL FORMAT BY THE L.A. GROUP, SARATOGA SPRINGS, NY (1996-1998)  
 CONVERTED TO DIGITAL FORMAT FROM MAG 27 TO MAG 03 BY WIELER MAPPING, INC. (2002)  
 CONVERTED TO ESR GEODATABASE FORMAT BY FOUNTAINS SPATIAL, INC. (2007-2008)



**TOWN OF STILLWATER**  
 SARATOGA COUNTY, NEW YORK  
 TAXABLE STATUS DATE: MARCH 1, 2028

**INDEX**