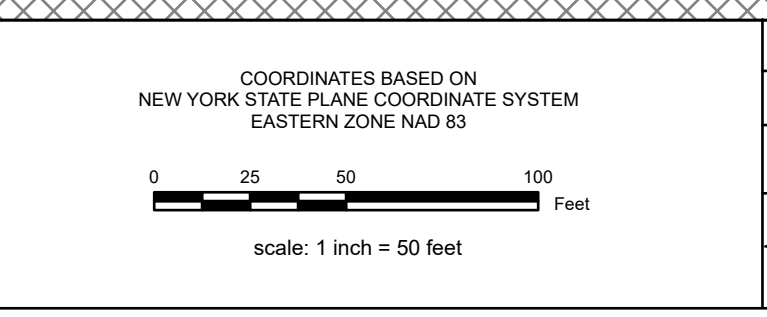


REAL PROPERTY TAX MAP
 PREPARED FOR: SARATOGA COUNTY BOARD OF SUPERVISORS
 UNDER SUPERVISION OF: REAL PROPERTY TAX SERVICE AGENCY
 PREPARED BY: L. ROBERT KIMBALL CONSULTING ENGINEERS, EBENSBURG, PA (1973-1978)
 CONVERTED TO DIGITAL FORMAT BY THE L.A. GROUP, SARATOGA SPRINGS, NY (1986-1998)
 CONVERTED TO DIGITAL FORMAT FROM NAD 27 TO NAD 83 BY WILHELM MAPPING, INC. (2002)
 CONVERTED TO ESRI GDB/DATABASE FORMAT BY FOUNTAINS SPATIAL, INC. (2007-2008)

THIS MAP HAS BEEN PREPARED FROM MAPS AND DEEDS AND OTHER INFORMATION OF PUBLIC RECORD. IN ACCORDANCE WITH THE PROVISIONS OF THE REAL PROPERTY TAX LAW, FOR ASSESSMENT PURPOSES ONLY.
 IT DOES NOT REPRESENT A LAND SURVEY AND MUST NOT BE CONSTRUED AS SUCH.
 DESCRIPTIONS OF REAL PROPERTY TAKEN HEREFROM FOR THE PURPOSE OF CONVEYANCE OR TRANSFER MUST BE LIMITED TO THOSE NECESSARY AND INCIDENTAL TO THE ADMINISTRATION OF THE REAL PROPERTY TAX LAW.

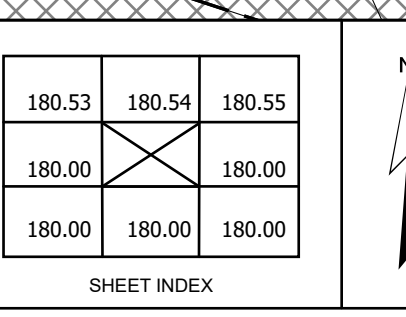


SPECIAL DISTRICTS	
AG: SARATOGA SPRINGS CITY SCHOOL 41550	LAKE:
SEWER: SARATOGA COUNTY DIST 1 010	WATER:
FIRE:	LIGHT:
	PARK:

PROPERTY LINE	
BLOCK LIMIT	GREAT LOT LINE
SECTION LIMIT	SUBDIVISION LOT LINE
TOWN/VILLAGE/CITY	STATE ROUTE
COUNTY LINE	STREET OR TOWN ROAD
RAILROAD	MAIN ST

LEGEND	
SCHOOL DISTRICT LINE	WATER
FIRE DISTRICT LINE	WATER DISTRICT LINE
WATER DISTRICT LINE	AGRICULTURAL DISTRICT
AGRICULTURAL DISTRICT	LIGHT DISTRICT
LIGHT DISTRICT	NAD 83 TIC LINES

GREAT LOT NUMBER	9 P	CALCULATED ACREAGE	9.8 A (C)
TAX MAP BLOCK NUMBER	(9)	DEED ACREAGE	9.8 A
FILED PLAN LOT NUMBER	160.00-3.9	SCALED DIMENSION	150.2
TAX MAP PARCEL NUMBER		DEED DIMENSION	150.2
STREAM/WATERBODY		COORDINATE LOCATOR	
		IDENTIFIES COMMON OWNER	



TAX MAP 180.62
CITY OF SARATOGA SPRINGS, NY
 SARATOGA COUNTY, NEW YORK
 TAXABLE STATUS DATE: March 1, 2026
 MAP EXPORTED ON: March 19, 2026