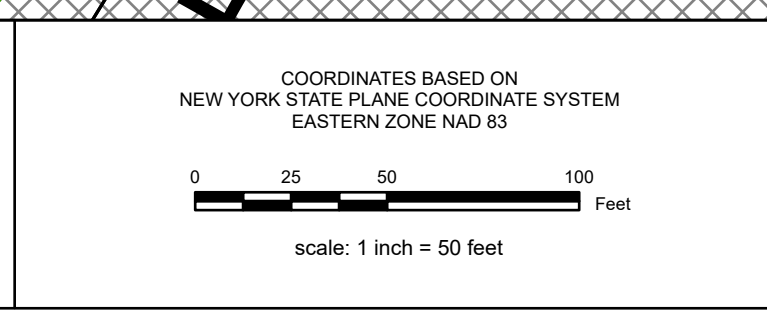


REAL PROPERTY TAX MAP
 PREPARED FOR: SARATOGA COUNTY BOARD OF SUPERVISORS
 UNDER SUPERVISION OF: REAL PROPERTY TAX SERVICE AGENCY
 PREPARED BY: L. ROBERT KIMBALL CONSULTING ENGINEERS, EBENSBURG, PA (1973-1978)
 CONVERSION TO DIGITAL FORMAT BY THE L.A. GROUP SARATOGA SPRINGS, NY (1996-1998)
 CONVERTED TO DIGITAL FORMAT FROM NAD 27 TO NAD 83 BY WILSON MAPING, INC. (2002)
 CONVERTED TO ESRI GDB/DATABASE FORMAT BY FOUNTAINS SPITAL, INC. (2007-2008)

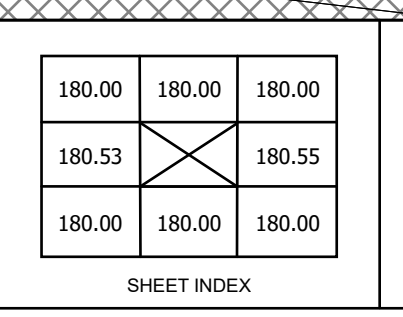
THIS MAP HAS BEEN PREPARED FROM MAPS AND DEEDS AND OTHER INFORMATION OF PUBLIC RECORD, IN ACCORDANCE WITH THE PROVISIONS OF THE REAL PROPERTY TAX LAW, FOR ASSESSMENT PURPOSES ONLY.
 IT DOES NOT REPRESENT A LAND SURVEY AND MUST NOT BE CONSTRUED AS SUCH.
 DESCRIPTIONS OF REAL PROPERTY TAKEN HEREFROM FOR THE PURPOSE OF CONVEYANCE OR TRANSFER, MUST BE LIMITED TO THOSE NECESSARY AND INCIDENTAL TO THE ADMINISTRATION OF THE REAL PROPERTY TAX LAW.



SPECIAL DISTRICTS	
AG: SARATOGA SPRINGS CITY SCHOOL 41550	LAKE:
SCHOOL: SARATOGA COUNTY DIST 1 010	WATER:
SEWER:	LIGHT:
FIRE:	PARK:

PROPERTY LINE		LEGEND	
PROPERTY LINE	---	GREAT LOT LINE	---
BLOCK LIMIT	---	SUBDIVISION LOT LINE	---
SECTION LIMIT	---	STATE ROUTE	---
TOWN/VILLAGE/CITY	---	TAX MAP PARCEL NUMBER	---
COUNTY LINE	---	STREAM/WATERBODY	---
RAILROAD	---		

GREAT LOT NUMBER		CALCULATED ACRES	
TAX MAP BLOCK NUMBER	---	DEED ACRES	---
FILED PLAN LOT NUMBER	---	SCALED DIMENSION	---
TAX MAP PARCEL NUMBER	---	DEED DIMENSION	---
		COORDINATE LOCATOR	---
		IDENTIFIES COMMON OWNER	---



TAX MAP 180.54
CITY OF SARATOGA SPRINGS, NY
 SARATOGA COUNTY, NEW YORK
 TAXABLE STATUS DATE: March 1, 2028
 MAP EXPORTED ON: March 10, 2028