

Allotment
Allotment

179.00

179.04

179.84

179.60

1

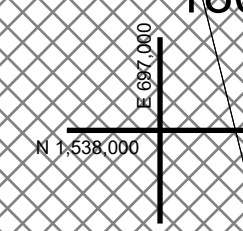
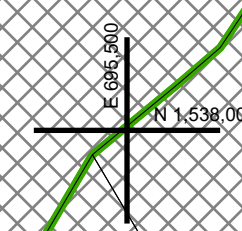
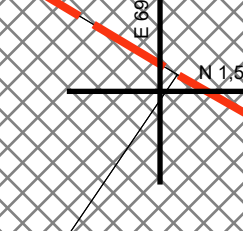
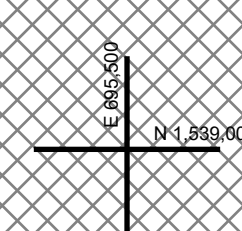
3.96 A

179.76

180.61

180.69

180.77



REAL PROPERTY TAX MAP

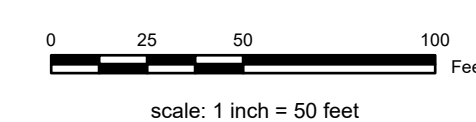
PREPARED FOR: SARATOGA COUNTY BOARD OF SUPERVISORS
UNDER SUPERVISION OF: REAL PROPERTY TAX SERVICE AGENCY

PREPARED BY:
L. ROBERT KIMBALL CONSULTING ENGINEERS, EBENSBURG, PA (1973-1978)
CONVERTED TO DIGITAL FORMAT BY THE L.A. GROUP SARATOGA SPRINGS, NY (1986-1998)
CONVERTED TO DIGITAL FORMAT FROM NAD 27 TO NAD 83 BY WILSON MAPPING, INC. (2002)
CONVERTED TO ESRI GECODATABASE FORMAT BY FOUNTAINS SPITAL, INC. (2007-2008)

THIS MAP HAS BEEN PREPARED FROM MAPS AND DEEDS AND OTHER INFORMATION OF PUBLIC RECORD, IN ACCORDANCE WITH THE PROVISIONS OF THE REAL PROPERTY TAX LAW, FOR ASSESSMENT PURPOSES ONLY.
IT DOES NOT REPRESENT A LAND SURVEY AND MUST NOT BE CONSTRUED AS SUCH.

DESCRIPTIONS OF REAL PROPERTY TAKEN HEREFROM FOR THE PURPOSE OF CONVEYANCE OR TRANSFER MUST BE LIMITED TO THOSE NECESSARY AND INCIDENTAL TO THE ADMINISTRATION OF THE REAL PROPERTY TAX LAW.

COORDINATES BASED ON
NEW YORK STATE PLANE COORDINATE SYSTEM
EASTERN ZONE NAD 83



SPECIAL DISTRICTS

| | | |
|------------------------------------|---------------|-----------------------|
| AG: | LAKE: | PROPERTY LINE: |
| SARATOGA SPRINGS CITY SCHOOL 41550 | | BLOCK LIMIT |
| | WATER: | SECTION LIMIT |
| | | TOWN/VILLAGE/CITY |
| SEWER: | LIGHT: | COUNTY LINE |
| | PARK: | RAILROAD |

LEGEND

| | | |
|-----------------------|-----------------------------|-------------------------|
| GREAT LOT LINE | SCHOOL DISTRICT LINE | GREAT LOT NUMBER |
| SUBDIVISION LOT LINE | FIRE DISTRICT LINE | TAX MAP BLOCK NUMBER |
| STATE ROUTE | WATER DISTRICT LINE | FILED PLAN LOT NUMBER |
| COUNTY ROUTE | AGRICULTURAL DISTRICT | TAX MAP PARCEL NUMBER |
| STREET OR TOWN ROAD | LIGHT DISTRICT | STREAM/WATERBODY |
| | NAD 83 TIC LINES | |

COLOCATOR

| | | | |
|-----------|--------|--------|--------|
| 9.8 A (C) | 179.00 | 179.00 | 180.00 |
| 8.8 A | 179.00 | 179.00 | 180.00 |
| 150.2 | 179.04 | 179.04 | 180.77 |

TAX MAP 179.76

CITY OF SARATOGA SPRINGS OD
SARATOGA COUNTY, NEW YORK
TAXABLE STATUS DATE: March 1, 2026
MAP EXPORTED ON: March 10, 2026