

REAL PROPERTY TAX MAP

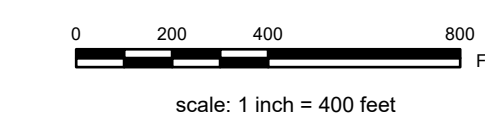
PREPARED FOR: SARATOGA COUNTY BOARD OF SUPERVISORS
 UNDER SUPERVISION OF: REAL PROPERTY TAX SERVICE AGENCY

PREPARED BY:
 L. ROBERT KIMBALL CONSULTING ENGINEERS, EBERSBURG, PA (1973-1978)
 CONVERTED TO DIGITAL FORMAT BY THE L.A. GROUP SARATOGA SPRINGS, NY (1998-1999)
 CONVERTED TO DIGITAL FORMAT FROM NAD 27 TO NAD 83 BY WELLES-MAPPING, INC. (2002)
 CONVERTED TO ESRI GDB/DATABASE FORMAT BY FOUNTAINS SPATIAL, INC. (2007-2008)

THIS MAP HAS BEEN PREPARED FROM MAPS AND DEEDS AND OTHER INFORMATION OF PUBLIC RECORD. IN ACCORDANCE WITH THE PROVISIONS OF THE REAL PROPERTY TAX LAW, FOR ASSESSMENT PURPOSES ONLY.
 IT DOES NOT REPRESENT A LAND SURVEY AND MUST NOT BE CONSTRUED AS SUCH.

DESCRIPTIONS OF REAL PROPERTY TAKEN HEREFROM FOR THE PURPOSE OF CONVEYANCE OR TRANSFER, MUST BE LIMITED TO THOSE NECESSARY AND INCIDENTAL TO THE ADMINISTRATION OF THE REAL PROPERTY TAX LAW.

COORDINATES BASED ON
 NEW YORK STATE PLANE COORDINATE SYSTEM
 EASTERN ZONE NAD 83



SPECIAL DISTRICTS

AG: SARATOGA SPRINGS CITY SCHOOL 41550	LAKE:
SCHOOL: SARATOGA COUNTY DIST 1 010	WATER:
FIRE:	PARK:

PROPERTY LINE

BLOCK LIMIT	---
SECTION LIMIT	---
TOWN/VILLAGE/CITY	---
COUNTY LINE	---
RAILROAD	---

LEGEND

GREAT LOT LINE	---	SCHOOL DISTRICT LINE	---
SUBDIVISION LOT LINE	---	FIRE DISTRICT LINE	---
STATE ROUTE	---	WATER DISTRICT LINE	---
COUNTY ROUTE	---	AGRICULTURAL DISTRICT	---
STREET OR TOWN ROAD	---	LIGHT DISTRICT	---
		NAD 83 TIC LINES	---

GREAT LOT NUMBER	①	CALCULATED ACREAGE	9.8 A (C)
TAX MAP BLOCK NUMBER	②	DEED ACREAGE	8.5 A
FILED PLAN LOT NUMBER	③	SCALED DIMENSION	150 (S)
TAX MAP PARCEL NUMBER	④	DEED DIMENSION	150.2
STREAM/WATERBODY	---	COORDINATE LOCATOR	+
		DENOTES COMMON OWNER	+

TAX MAP 165.00

164.00	165.00	166.00	167.00	168.00	169.00

TAX MAP 165.00

CITY OF SARATOGA SPRINGS, NY
 SARATOGA COUNTY, NEW YORK
 TAXABLE STATUS DATE: March 1, 2028 MAP EXPORTED ON: March 10, 2028