

**REAL PROPERTY TAX MAP**

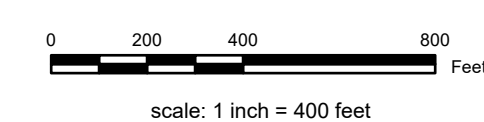
PREPARED FOR: SARATOGA COUNTY BOARD OF SUPERVISORS  
UNDER SUPERVISION OF: REAL PROPERTY TAX SERVICE AGENCY

PREPARED BY:  
L. ROBERT KIMBALL CONSULTING ENGINEERS, EBENSBURG, PA (1973-1978)  
CONVERTED TO DIGITAL FORMAT BY THE L.A. GROUP SARATOGA SPRINGS, NY (1998-1998)  
CONVERTED TO DIGITAL FORMAT FROM NAD 27 TO NAD 83 BY WILSON-MAPPING, INC. (2002)  
CONVERTED TO ESRI GECODATABASE FORMAT BY FOUNTAINS SPATIAL, INC. (2007-2008)

THIS MAP HAS BEEN PREPARED FROM MAPS AND DEEDS AND OTHER INFORMATION OF PUBLIC RECORD. IN ACCORDANCE WITH THE PROVISIONS OF THE REAL PROPERTY TAX LAW, FOR ASSESSMENT PURPOSES ONLY.  
IT DOES NOT REPRESENT A LAND SURVEY AND MUST NOT BE CONSTRUED AS SUCH.

DESCRIPTIONS OF REAL PROPERTY TAKEN HEREFROM FOR THE PURPOSE OF CONVEYANCE OR TRANSFER, MUST BE LIMITED TO THOSE NECESSARY AND INCIDENTAL TO THE ADMINISTRATION OF THE REAL PROPERTY TAX LAW.

COORDINATES BASED ON  
NEW YORK STATE PLANE COORDINATE SYSTEM  
EASTERN ZONE NAD 83



**SPECIAL DISTRICTS**

**AG:** SARATOGA SPRINGS CITY SCHOOL 41550  
**SCHOOL:** SARATOGA COUNTY DIST 1 010  
**SEWER:**  
**FIRE:**

**LAKE:**  
**WATER:**  
**LIGHT:**  
**PARK:**

PROPERTY LINE  
BLOCK LIMIT  
SECTION LIMIT  
TOWN/VILLAGE/CITY  
COUNTY LINE  
RAILROAD

GREAT LOT LINE  
SUBDIVISION/LOT LINE  
STATE ROUTE  
COUNTY ROUTE  
STREET OR TOWN ROAD

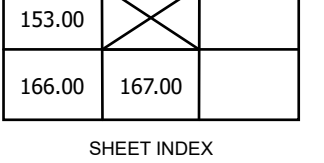
SCHOOL DISTRICT LINE  
FIRE DISTRICT LINE  
WATER DISTRICT LINE  
AGRICULTURAL DISTRICT  
LIGHT DISTRICT  
NAD 83 TIC LINES

**LEGEND**

GREAT LOT NUMBER  
TAX MAP BLOCK NUMBER  
FILED PLAN LOT NUMBER  
TAX MAP PARCEL NUMBER  
STREAM/WATERBODY

1  
9  
160.00-3.9  
CALCULATED ACREAGE  
DEED ACREAGE  
SCALED DIMENSION  
DEED DIMENSION  
COORDINATE LOCATOR  
DENOTES COMMON OWNER

9.8 A (C)  
8.8 A  
150 (S)  
150.2



**TAX MAP 154.00**  
**CITY OF SARATOGA SPRINGS, NY**  
**SARATOGA COUNTY, NEW YORK**

TAXABLE STATUS DATE: March 1, 2026  
MAP EXPORTED ON: March 19, 2026