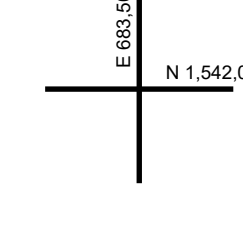
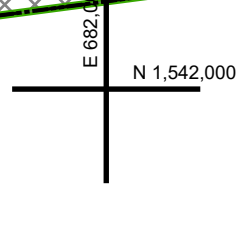
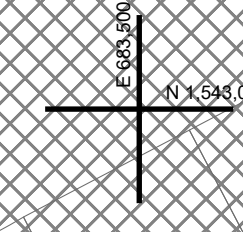
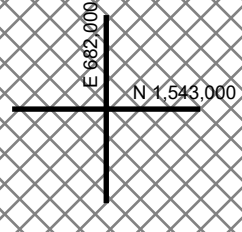


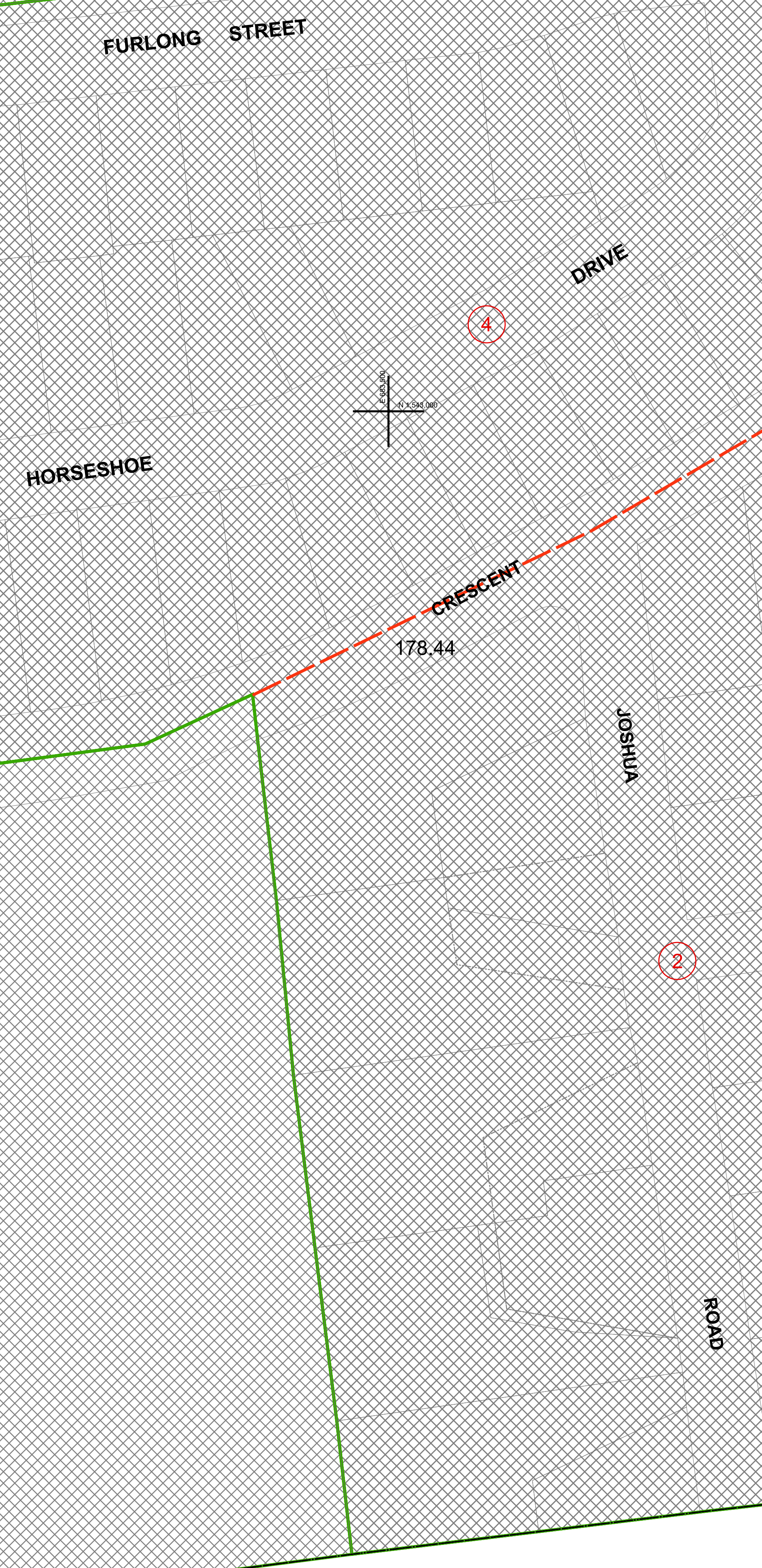
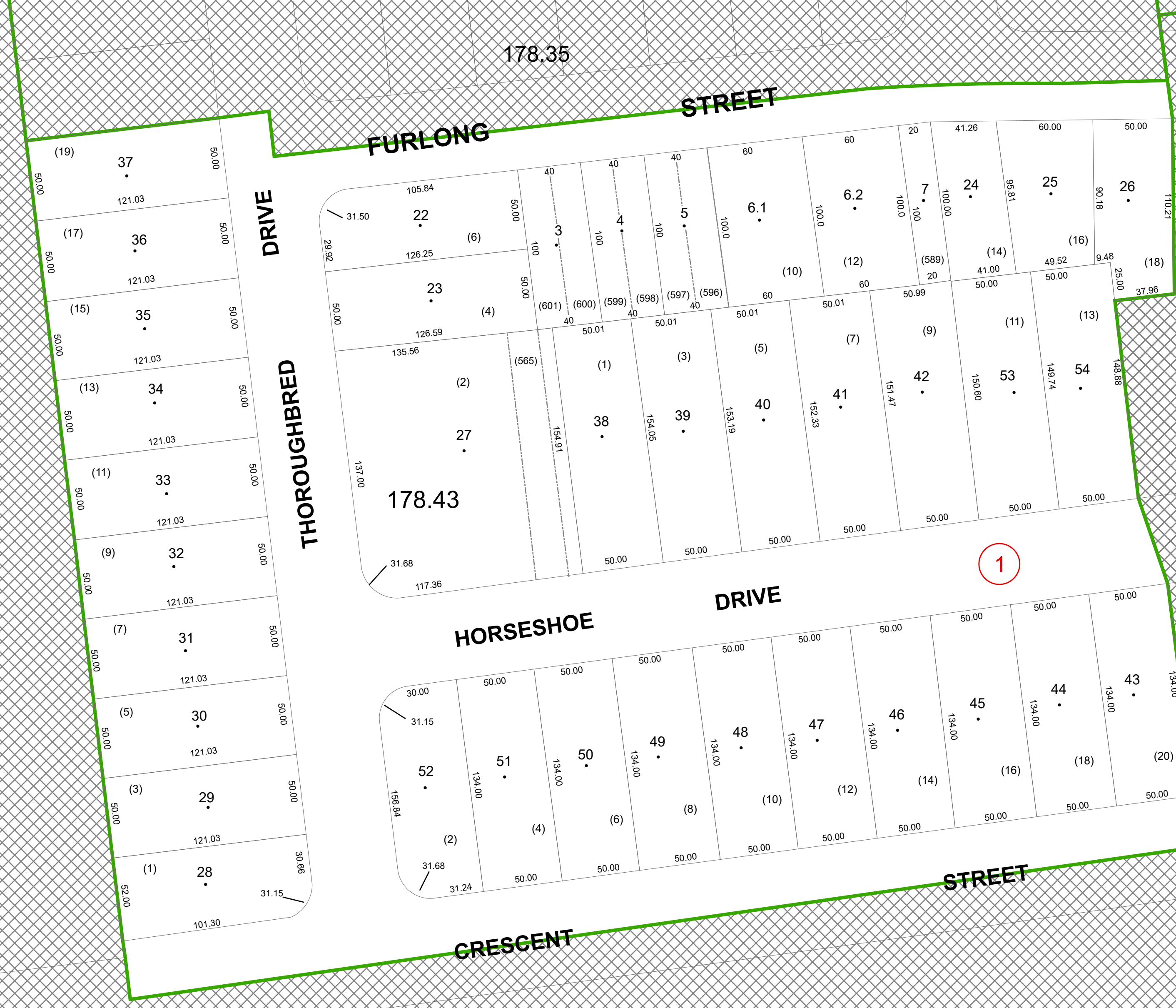
SOUTH



CRESCENT

178.00

BROADWAY



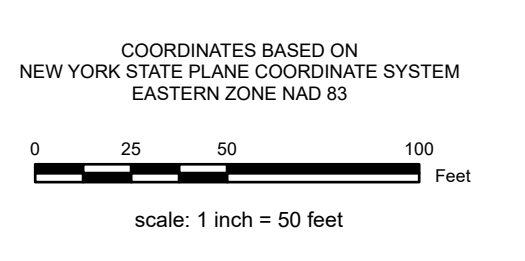
REAL PROPERTY TAX MAP

PREPARED FOR: SARATOGA COUNTY BOARD OF SUPERVISORS
 UNDER SUPERVISION OF: REAL PROPERTY TAX SERVICE AGENCY

PREPARED BY:
 L. ROBERT KIMBALL CONSULTING ENGINEERS, EBENSBURG, PA (1973-1978)
 CONVERTED TO DIGITAL FORMAT BY THE L.A. GROUP, SARATOGA SPRINGS, NY (1986-1998)
 CONVERTED TO DIGITAL FORMAT FROM NAD 27 TO NAD 83 BY WILSON MAPPING, INC. (2002)
 CONVERTED TO ESRI GDB/DATABASE FORMAT BY FOUNTAINS SPATIAL, INC. (2007-2008)

THIS MAP HAS BEEN PREPARED FROM MAPS AND DEEDS AND OTHER INFORMATION OF PUBLIC RECORD, IN ACCORDANCE WITH THE PROVISIONS OF THE REAL PROPERTY TAX LAW, FOR ASSESSMENT PURPOSES ONLY.
 IT DOES NOT REPRESENT A LAND SURVEY AND MUST NOT BE CONSTRUED AS SUCH.

DESCRIPTIONS OF REAL PROPERTY TAKEN HEREFROM FOR THE PURPOSE OF CONVEYANCE OR TRANSFER MUST BE LIMITED TO THOSE NECESSARY AND INCIDENTAL TO THE ADMINISTRATION OF THE REAL PROPERTY TAX LAW.



SPECIAL DISTRICTS

SCHOOL: SARATOGA SPRINGS CITY SCH DIST #12300	SEWER: SARATOGA CO. DIST. 1 5000
AG:	LIGHT:
FIRE:	PARK:
LAKE:	WATER:

PROPERTY LINE

PROPERTY LINE	---
BLOCK LIMIT	---
SECTION LIMIT	---
TOWN/VILLAGE/CITY	---
COUNTY LINE	---
RAILROAD	---

GREAT LOT LINE

GREAT LOT LINE	---
SUBDIVISION LOT LINE	---
STATE ROUTE	---
COUNTY ROUTE	---
STREET OR TOWN ROAD	---

LEGEND

SCHOOL DISTRICT LINE	---
FIRE DISTRICT LINE	---
WATER DISTRICT LINE	---
AGRICULTURAL DISTRICT	---
LIGHT DISTRICT	---
NAD 83 TIC LINES	---

GREAT LOT NUMBER	①
TAX MAP BLOCK NUMBER	②
FILED PLAN LOT NUMBER	③
TAX MAP PARCEL NUMBER	④
STREAM/WATERBODY	---

178.34	178.35	178.36
178.00	178.00	178.00
178.00	178.00	178.00

SHEET INDEX

TAX MAP 178.43
CITY OF SARATOGA SPRINGS ID
 SARATOGA COUNTY, NEW YORK
 TAXABLE STATUS DATE: March 1, 2026
 MAP EXPORTED ON: March 19, 2026