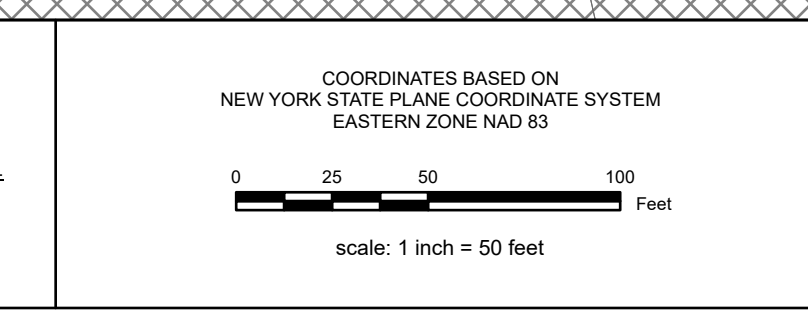




REAL PROPERTY TAX MAP
 PREPARED FOR: SARATOGA COUNTY BOARD OF SUPERVISORS
 UNDER SUPERVISION OF: REAL PROPERTY TAX SERVICE AGENCY
 PREPARED BY:
 L. ROBERT KIMBALL CONSULTING ENGINEERS, EBENSBURG, PA (1973-1978)
 CONVERTED TO DIGITAL FORMAT BY THE L.A. GROUP SARATOGA SPRINGS, NY (1986-1998)
 CONVERTED TO DIGITAL FORMAT FROM NAD 27 TO NAD 83 BY WELLES-MAPPING, INC. (2002)
 CONVERTED TO ESRI GECODATABASE FORMAT BY FOUNTAINS SPATIAL, INC. (2007-2008)

THIS MAP HAS BEEN PREPARED FROM MAPS AND DEEDS AND OTHER INFORMATION OF PUBLIC RECORD. IN ACCORDANCE WITH THE PROVISION OF THE REAL PROPERTY TAX LAW, FOR ASSESSMENT PURPOSES ONLY.
 IT DOES NOT REPRESENT A LAND SURVEY AND MUST NOT BE CONSTRUED AS SUCH.
 DESCRIPTIONS OF REAL PROPERTY TAKEN HEREFROM FOR THE PURPOSE OF CONVEYANCE OR TRANSFER MUST BE LIMITED TO THOSE NECESSARY AND INCIDENTAL TO THE ADMINISTRATION OF THE REAL PROPERTY TAX LAW.

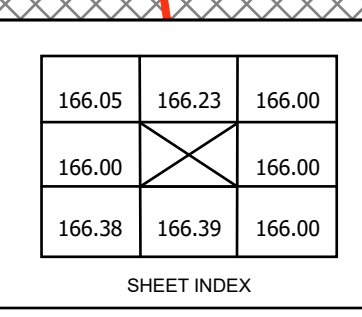


SPECIAL DISTRICTS	
SCHOOL: SARATOGA SPRINGS CITY 901 DIST #12300	SEWER: SARATOGA CO. DIST. 1 5000
AG:	LIGHT:
FIRE:	PARK:
LAKE:	WATER:

PROPERTY LINE	
BLOCK LIMIT	GREAT LOT LINE
SECTION LIMIT	SUBDIVISION LOT LINE
TOWN VILLAGE CITY	STATE ROUTE
COUNTY LINE	COUNTY ROUTE
RAILROAD	STREET OR TOWN ROAD

LEGEND	
SCHOOL DISTRICT LINE	FIRE DISTRICT LINE
WATER DISTRICT LINE	AGRICULTURAL DISTRICT
LIGHT DISTRICT	NAD 83 TIC LINES

GREAT LOT NUMBER	TAX MAP BLOCK NUMBER	CALCULATED ACREAGE	S.S.A. (C)
FILED PLAN LOT NUMBER	FILED PARCEL NUMBER	DEED ACREAGE	S.S.A. (S)
TAX MAP PARCEL NUMBER	COORDINATE LOCATOR	DEED DIMENSION	150.2
STREAMWATERBODY	IDENTIFIES COMMON OWNER	COORDINATE LOCATOR	



TAX MAP 166.31
CITY OF SARATOGA SPRINGS ID
SARATOGA COUNTY, NEW YORK
 TAXABLE STATUS DATE: March 1, 2026
 MAP EXPORTED ON: March 19, 2026