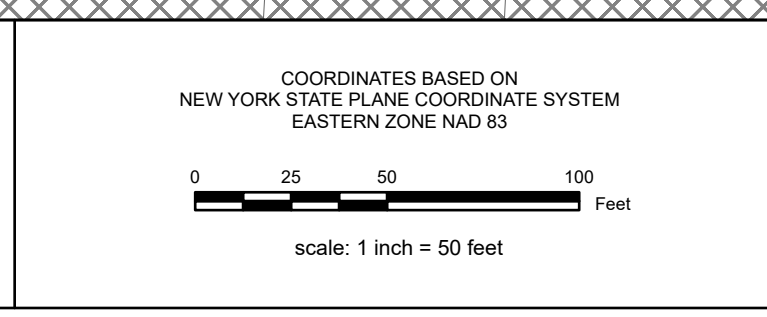


**REAL PROPERTY TAX MAP**  
 SARATOGA COUNTY BOARD OF SUPERVISORS  
 UNDER SUPERVISION OF: REAL PROPERTY TAX SERVICE AGENCY  
 PREPARED BY:  
 L. ROBERT KIMBALL CONSULTING ENGINEERS, ERIENSBURG, PA (1973-1978)  
 CONVERTED TO DIGITAL FORMAT BY THE L.A. GROUP SARATOGA SPRINGS, NY (1998-1999)  
 CONVERTED TO DIGITAL FORMAT FROM NAD 27 TO NAD 83 BY WILDER MAPPING, INC. (2002)  
 CONVERTED TO ESRI GDB/DATABASE FORMAT BY FOUNTAINS SPITAL, INC. (2007-2008)

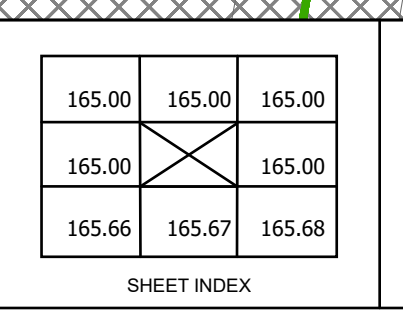
THIS MAP HAS BEEN PREPARED FROM MAPS AND DEEDS AND OTHER INFORMATION OF PUBLIC RECORD, IN ACCORDANCE WITH THE PROVISIONS OF THE REAL PROPERTY TAX LAW, FOR ASSESSMENT PURPOSES ONLY.  
 IT DOES NOT REPRESENT A LAND SURVEY AND MUST NOT BE CONSTRUED AS SUCH.  
 DESCRIPTIONS OF REAL PROPERTY TAKEN HEREFROM FOR THE PURPOSE OF CONVEYANCE OR TRANSFER, MUST BE LIMITED TO THOSE NECESSARY AND INCIDENTAL TO THE ADMINISTRATION OF THE REAL PROPERTY TAX LAW.



SPECIAL DISTRICTS	
SCHOOL: SARATOGA SPRINGS CITY SCH DIST #12300	SEWER: SARATOGA CO. DIST. 1 50000
AG:	LIGHT:
FIRE:	PARK:
LAKE:	WATER:

LEGEND	
PROPERTY LINE	GREAT LOT LINE
BLOCK LIMIT	SUBDIVISION LOT LINE
SECTION LIMIT	STATE ROUTE
TOWN/VILLAGE/CITY	COUNTY ROUTE
COUNTY LINE	STREET OR TOWN ROAD
RAILROAD	
	SCHOOL DISTRICT LINE
	FIRE DISTRICT LINE
	WATER DISTRICT LINE
	AGRICULTURAL DISTRICT
	LIGHT DISTRICT
	NAD 83 TIC LINES

GREAT LOT NUMBER	9.8.A (C)	CALCULATED ACREAGE	9.8.A (C)
TAX MAP BLOCK NUMBER	9.8.A	DEED ACREAGE	9.8.A
FILED PLAN LOT NUMBER	150 (S)	SCALED DIMENSION	150 (S)
TAX MAP PARCEL NUMBER	150.2	DEED DIMENSION	150.2
STREAM/WATERBODY	160.00-3.9	COORDINATE LOCATOR	160.00-3.9
		DENOTES COMMON OWNER	



**TAX MAP 165.59c-4**  
**CITY OF SARATOGA SPRINGS ID**  
 SARATOGA COUNTY, NEW YORK  
 TAXABLE STATUS DATE: March 1, 2026  
 MAP EXPORTED ON: March 19, 2026