

CITY OF SARATOGA SPRINGS (O.D.)

MYRTLE ST

CHURCH STREET

VAN RENSSELAER STREET

MARVIN STREET

CENTER ALLEY

ANDREW'S

STREET

STREET

STREET

SEWARD

BEEKMAN

MARVIN PLACE

MARVIN PLACE

165.41

165.42

165.00

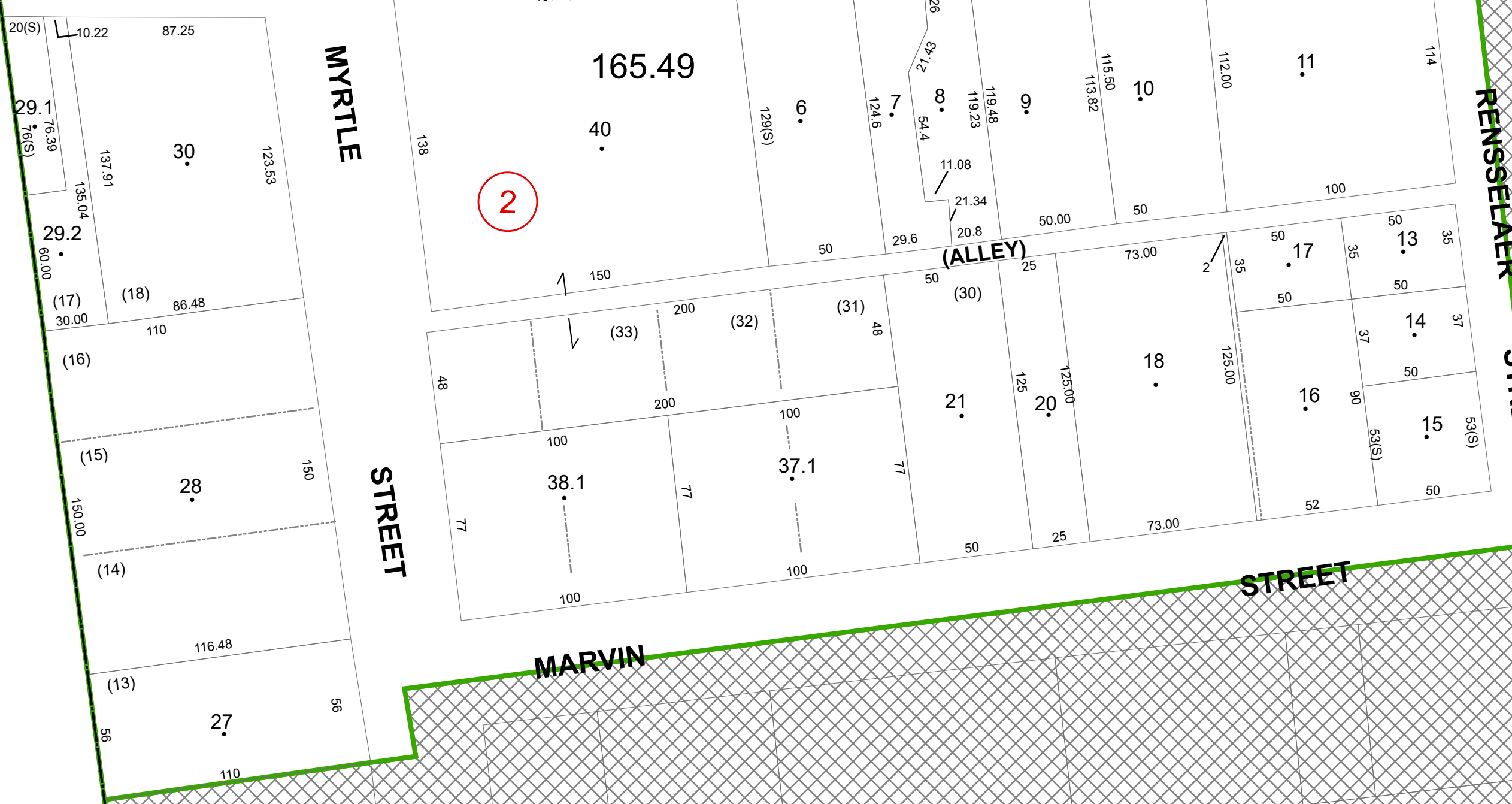
165.50

9N

165.49

165.57

165.58



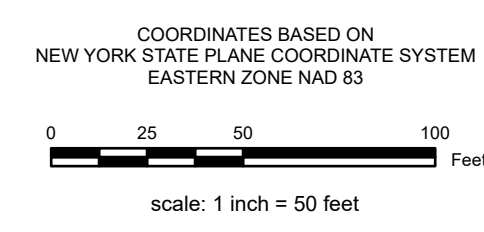
REAL PROPERTY TAX MAP

PREPARED FOR: SARATOGA COUNTY BOARD OF SUPERVISORS  
UNDER SUPERVISION OF: REAL PROPERTY TAX SERVICE AGENCY

PREPARED BY:  
L. ROBERT KIMBALL CONSULTING ENGINEERS, EBENSBURG, PA (1973-1978)  
CONVERTED TO DIGITAL FORMAT BY THE L.A. GROUP SARATOGA SPRINGS, NY (1986-1998)  
CONVERTED TO DIGITAL FORMAT FROM NAD 27 TO NAD 83 BY WILSON MAPPING, INC. (2002)  
CONVERTED TO ESRI GEODATABASE FORMAT BY FOUNTAINS SPATIAL, INC. (2007-2008)

THIS MAP HAS BEEN PREPARED FROM MAPS AND DEEDS AND OTHER INFORMATION OF PUBLIC RECORD. IN ACCORDANCE WITH THE PROVISIONS OF THE REAL PROPERTY TAX LAW, FOR ASSESSMENT PURPOSES ONLY.  
IT DOES NOT REPRESENT A LAND SURVEY AND MUST NOT BE CONSTRUED AS SUCH.

DESCRIPTIONS OF REAL PROPERTY TAKEN HEREFROM FOR THE PURPOSE OF CONVEYANCE OR TRANSFER MUST BE LIMITED TO THOSE NECESSARY AND INCIDENTAL TO THE ADMINISTRATION OF THE REAL PROPERTY TAX LAW.



SPECIAL DISTRICTS

SCHOOL: SARATOGA SPRINGS CITY SCH DIST #12350	SEWER: SARATOGA CO. DIST. 1 56510
AG:	LIGHT:
FIRE:	PARK:
LAKE:	WATER:

PROPERTY LINE	—
BLOCK LIMIT	—
SECTION LIMIT	—
TOWN/VILLAGE/CITY	—
COUNTY LINE	—
RAILROAD	—

GREAT LOT LINE	—
SUBDIVISION LOT LINE	—
STATE ROUTE	—
COUNTY ROUTE	—
STREET OR TOWN ROAD	—
MAIN ST	—

LEGEND

SCHOOL DISTRICT LINE	—
FIRE DISTRICT LINE	—
WATER DISTRICT LINE	—
AGRICULTURAL DISTRICT	—
LIGHT DISTRICT	—
NAD 83 TIC LINES	—

GREAT LOT NUMBER	○
TAX MAP BLOCK NUMBER	⑨
FILED PLAN LOT NUMBER	⑨
TAX MAP PARCEL NUMBER	160.00-3-9
STREAM/WATERBODY	—

CALCULATED ACREAGE	9.8 A (C)
DEED ACREAGE	9.8 A
SCALED DIMENSION	150.2
DEED DIMENSION	150.2
COORDINATE LOCATOR	—
DENOTES COMMON OWNER	—

165.00	165.41	165.42
165.00	165.00	165.00
165.00	165.00	165.00

SHEET INDEX



TAX MAP 165.49  
CITY OF SARATOGA SPRINGS ID  
SARATOGA COUNTY, NEW YORK  
TAXABLE STATUS DATE: March 1, 2026 MAP EXPORTED ON: March 19, 2026