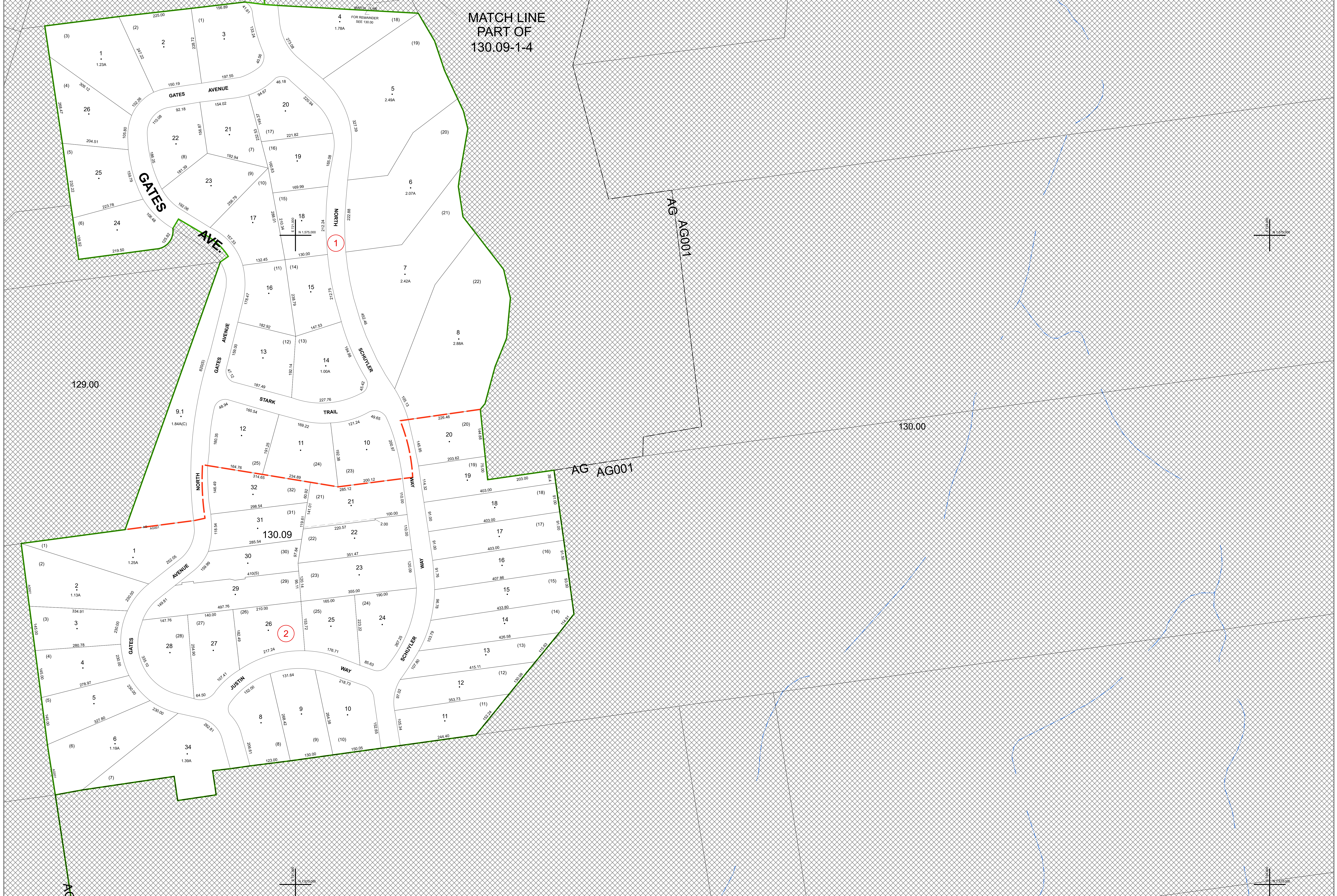


MATCH LINE
PART OF
130.09-1-4



129.00

130.00

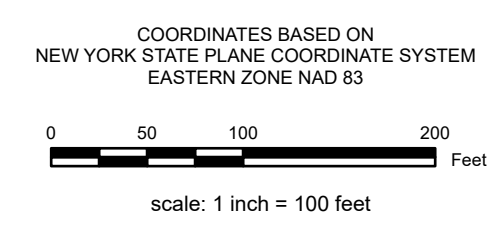
130.09

REAL PROPERTY TAX MAP

PREPARED FOR: SARATOGA COUNTY BOARD OF SUPERVISORS
UNDER SUPERVISION OF: REAL PROPERTY TAX SERVICE AGENCY

PREPARED BY:
L. ROBERT KIMBALL CONSULTING ENGINEERS, EBENSBURG, PA (1973-1978)
CONVERTED TO DIGITAL FORMAT BY THE L.A. GROUP SARATOGA SPRINGS, NY (1986-1998)
CONVERTED TO DIGITAL FORMAT FROM NAD 27 TO NAD 83 BY WILKINS MAPPING, INC. (2002)
CONVERTED TO ESRI GEODATABASE FORMAT BY FOUNTAINS SPATIAL, INC. (2007-2008)

THIS MAP HAS BEEN PREPARED FROM MAPS AND DEEDS AND OTHER INFORMATION OF PUBLIC RECORD, IN ACCORDANCE WITH THE PROVISIONS OF THE REAL PROPERTY TAX LAW, FOR ASSESSMENT PURPOSES ONLY.
IT DOES NOT REPRESENT A LAND SURVEY AND MUST NOT BE CONSTRUED AS SUCH.
DESCRIPTIONS OF REAL PROPERTY TAKEN HEREFROM FOR THE PURPOSE OF CONVEYANCE OR TRANSFER MUST BE LIMITED TO THOSE NECESSARY AND INCIDENTAL TO THE ADMINISTRATION OF THE REAL PROPERTY TAX LAW.



SPECIAL DISTRICTS

AG:	LAKE:
FIRE: BACON HILL FIRE PROTECTION: F008	WATER:
SCHOOL: SCHULVILLE CENTRAL: 41501	LIGHT:
SEWER:	PARK:

PROPERTY LINE

PROPERTY LINE	---
BLOCK LIMIT	---
SECTION LIMIT	---
TOWN VILLAGE CITY	---
COUNTY LINE	---
RAILROAD	---

GREAT LOT LINE

GREAT LOT LINE	---
SUBDIVISION LOT LINE	---
STATE ROUTE	---
STREET OR TOWN ROAD	---

SCHOOL DISTRICT LINE

SCHOOL DISTRICT LINE	---
FIRE DISTRICT LINE	---
WATER DISTRICT LINE	---
AGRICULTURAL DISTRICT	---
LIGHT DISTRICT	---
NAD 83 TIC LINES	---

LEGEND

GREAT LOT NUMBER	---
TAX MAP BLOCK NUMBER	---
FILED PLAN LOT NUMBER	---
TAX MAP PARCEL NUMBER	---
STREAM/WATERBODY	---

129.00	130.00	130.00
129.00	130.00	130.00
129.00	130.00	130.00

SHEET INDEX

CALCULATED ACREAGE	9.8 A (C)
DEED ACREAGE	8.8 A
SCALED DIMENSION	150.2
DEED DIMENSION	150.2
COORDINATE LOCATOR	---
DENOTES COMMON OWNER	---

129.00	130.00	130.00
129.00	130.00	130.00
129.00	130.00	130.00

SHEET INDEX

TAX MAP 130.09
TOWN OF NORTHUMBERLAND
SARATOGA COUNTY, NEW YORK
TAXABLE STATUS DATE: March 1, 2028 MAP EXPORTED ON: March 26, 2028