

V049.27

V049.28

V050.21

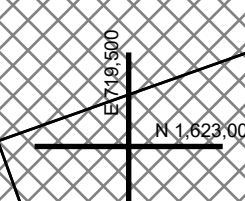
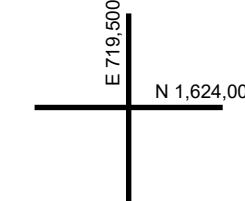
V049.35

49.36

V050.29

1

1.1
28.29 A(C)



REAL PROPERTY TAX MAP

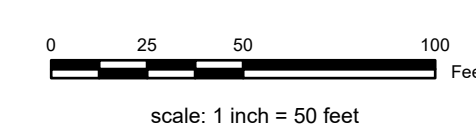
PREPARED FOR: SARATOGA COUNTY BOARD OF SUPERVISORS
UNDER SUPERVISION OF: REAL PROPERTY TAX SERVICE AGENCY

PREPARED BY:
L. ROBERT KIMBALL CONSULTING ENGINEERS, EBENSBURG, PA (1973-1978)
CONVERTED TO DIGITAL FORMAT BY THE L.A. GROUP SARATOGA SPRINGS, NY (1986-1998)
CONVERTED TO DIGITAL FORMAT FROM NAD 27 TO NAD 83 BY WILSON MAPPING, INC. (2002)
CONVERTED TO ESRI GDB/DATABASE FORMAT BY FOUNTAINS SPITAL, INC. (2007-2008)

THIS MAP HAS BEEN PREPARED FROM MAPS AND DEEDS AND OTHER INFORMATION OF PUBLIC RECORD. IN ACCORDANCE WITH THE PROVISIONS OF THE REAL PROPERTY TAX LAW, FOR ASSESSMENT PURPOSES ONLY.
IT DOES NOT REPRESENT A LAND SURVEY AND MUST NOT BE CONSTRUED AS SUCH.

DESCRIPTIONS OF REAL PROPERTY TAKEN HEREFROM FOR THE PURPOSE OF CONVEYANCE OR TRANSFER MUST BE LIMITED TO THOSE NECESSARY AND INCIDENTAL TO THE ADMINISTRATION OF THE REAL PROPERTY TAX LAW.

COORDINATES BASED ON
NEW YORK STATE PLANE COORDINATE SYSTEM
EASTERN ZONE NAD 83



SPECIAL DISTRICTS

SCHOOL:	SOUTH GLENS FALLS CENTRAL 41401
FIRE:	
AG:	
SEWER:	

LIGHT:	
WATER:	
PARK:	
LAKE:	

PROPERTY LINE

BLOCK LIMIT	---
SECTION LIMIT	---
TOWN/VILLAGE/CITY	---
COUNTY LINE	---
RAILROAD	---

GREAT LOT LINE

SUBDIVISION LOT LINE	---
STATE ROUTE	---
COUNTY ROUTE	---
STREET OR TOWN ROAD	---

LEGEND

SCHOOL DISTRICT LINE	---
FIRE DISTRICT LINE	---
WATER DISTRICT LINE	---
AGRICULTURAL DISTRICT	---
LIGHT DISTRICT	---
NAD 83 TIC LINES	---

GREAT LOT NUMBER	---
TAX MAP BLOCK NUMBER	---
FILED PLAN LOT NUMBER	---
TAX MAP PARCEL NUMBER	---
STREAM/WATERBODY	---

CALCULATED ACREAGE	---
DEED ACREAGE	---
SCALED DIMENSION	---
DEED DIMENSION	---
COORDINATE LOCATOR	---
IDENTIFIES COMMON OWNER	---

9.8 A (C)	049.00	049.00	050.00
9.8 A	V049.35	X	050.01
150 (S)	049.00	049.00	050.00
150.2	049.00	049.00	050.00

TAX MAP

VILLAGE OF SOUTH GLENS FALLS
SARATOGA COUNTY, NEW YORK

V049.36

TAXABLE STATUS DATE: March 1, 2026
MAP EXPORTED ON: March 20, 2026