

FD SCH
FD026
414401

WT WT108

049.00

049.26

49.25
①

049.34

049.33

049.25

SANDY BOULEVARD

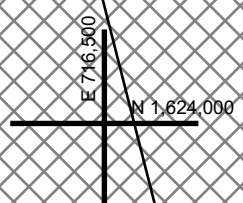
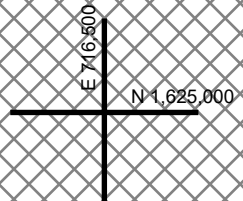
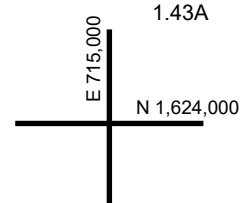
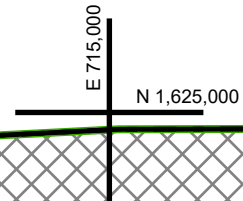
BOULEVARD

BOULEVARD

HUDSON

1
2.76A

18
1.43A



REAL PROPERTY TAX MAP
SARATOGA COUNTY BOARD OF SUPERVISORS
UNDER SUPERVISION OF: REAL PROPERTY TAX SERVICE AGENCY

THIS MAP HAS BEEN PREPARED FROM MAPS AND DEEDS AND OTHER INFORMATION OF PUBLIC RECORD, IN ACCORDANCE WITH THE PROVISIONS OF THE REAL PROPERTY TAX LAW, FOR ASSESSMENT PURPOSES ONLY.
IT DOES NOT REPRESENT A LAND SURVEY AND MUST NOT BE CONSTRUED AS SUCH.

COORDINATES BASED ON
NEW YORK STATE PLANE COORDINATE SYSTEM
EASTERN ZONE NAD 83
0 25 50 100
Feet
Scale: 1 inch = 50 feet

SPECIAL DISTRICTS
SCHOOL: SOUTH GLENS FALLS CENTRAL 414401
FIRE: MOREAU FIRE PROTECTION FD005
AG:
SEWER:

LIGHT:
WATER: MOREAU CONSOLIDATED WATER #1 WT108
PARK:
LAKE:

PROPERTY LINE
BLOCK LIMIT
SECTION LIMIT
TOWN/VILLAGE/CITY
COUNTY LINE
RAILROAD

GREAT LOT LINE
SUBDIVISION LOT LINE
STATE ROUTE
COUNTY ROUTE
STREET OR TOWN ROAD

LEGEND
SCHOOL DISTRICT LINE
FIRE DISTRICT LINE
WATER DISTRICT LINE
AGRICULTURAL DISTRICT
LIGHT DISTRICT
NAD 83 TIC LINES

GREAT LOT NUMBER
TAX MAP BLOCK NUMBER
FILED PLAN LOT NUMBER
TAX MAP PARCEL NUMBER
STREAM/WATERBODY

CALCULATED ACREAGE
DEED ACREAGE
SCALED DIMENSION
DEED DIMENSION
COORDINATE LOCATOR
DENOTES COMMON OWNER

TAX MAP
SARATOGA COUNTY, NEW YORK
TOWN OF MOREAU
SARATOGA COUNTY, NEW YORK
TAXABLE STATUS DATE: March 1, 2026
MAP EXPORTED ON: March 20, 2026

SHEET INDEX
049.00 049.01
049.02 049.03 049.04
049.25