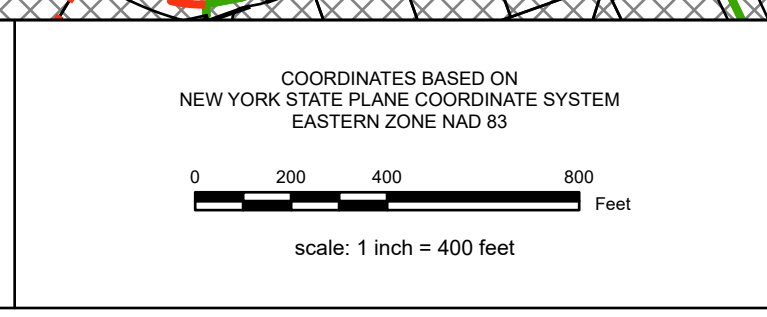


REAL PROPERTY TAX MAP
 PREPARED FOR: SARATOGA COUNTY BOARD OF SUPERVISORS
 UNDER SUPERVISION OF: REAL PROPERTY TAX SERVICE AGENCY
 PREPARED BY:
 L. ROBERT KIMBALL CONSULTING ENGINEERS, EBENSBURG, PA (1973-1978)
 CONVERTED TO DIGITAL FORMAT BY THE L.A. GROUP SARATOGA SPRINGS, NY (1986-1998)
 CONVERTED TO DIGITAL FORMAT FROM NAD 27 TO NAD 83 BY WELER-MAPPING, INC. (2002)
 CONVERTED TO ESRI GEODATABASE FORMAT BY FOUNTAINS SPATIAL, INC. (2007-2008)

THIS MAP HAS BEEN PREPARED FROM MAPS AND DEEDS AND OTHER INFORMATION OF PUBLIC RECORD. IN ACCORDANCE WITH THE PROVISIONS OF THE REAL PROPERTY TAX LAW, FOR ASSESSMENT PURPOSES ONLY.
 IT DOES NOT REPRESENT A LAND SURVEY AND MUST NOT BE CONSTRUED AS SUCH.
 DESCRIPTIONS OF REAL PROPERTY TAKEN HEREFROM FOR THE PURPOSE OF CONVEYANCE OR TRANSFER MUST BE LIMITED TO THOSE NECESSARY AND INCIDENTAL TO THE ADMINISTRATION OF THE REAL PROPERTY TAX LAW.

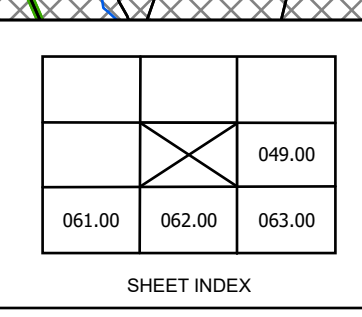


SPECIAL DISTRICTS	
SCHOOL: SOUTH GLENS FALLS CENTRAL 416401	LIGHT:
FIRE: MOREAU FIRE PROTECTION F0055	WATER:
AG:	PARK:
SEWER:	LAKE:

PROPERTY LINE	
BLOCK LIMIT	GREAT LOT LINE
SECTION LIMIT	SUBDIVISION LOT LINE
TOWN VILLAGE CITY	STATE ROUTE
COUNTY LINE	COUNTY ROUTE
RAILROAD	STREET OR TOWN ROAD

LEGEND	
SCHOOL DISTRICT LINE	FIRE DISTRICT LINE
WATER DISTRICT LINE	AGRICULTURAL DISTRICT
LIGHT DISTRICT	NAD 83 TIC LINES
GREAT LOT NUMBER	TAX MAP BLOCK NUMBER
FILED PLAN LOT NUMBER	TAX MAP PARCEL NUMBER
STREAM/WATERBODY	

CALCULATED ACREAGE	
DEED ACREAGE	8.8 A (C)
SCALED DIMENSION	8.8 A
DEED DIMENSION	150 (S)
COORDINATE LOCATOR	150.2
DENOTES COMMON OWNER	



TAX MAP 048.00
TOWN OF MOREAU
SARATOGA COUNTY, NEW YORK
 TAXABLE STATUS DATE: March 1, 2026
 MAP EXPORTED ON: March 20, 2026