

177.09

TERRACE

177.13

STARK

176.00

1

176.16

BOULEVARD

177.00

REAL PROPERTY TAX MAP

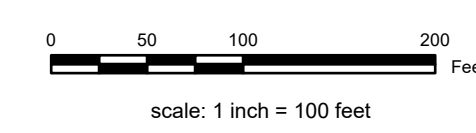
PREPARED FOR: SARATOGA COUNTY BOARD OF SUPERVISORS
UNDER SUPERVISION OF: REAL PROPERTY TAX SERVICE AGENCY

PREPARED BY:
L. ROBERT KIMBALL CONSULTING ENGINEERS, EBENSBURG, PA (1973-1978)
CONVERTED TO DIGITAL FORMAT BY THE L.A. GROUP SARATOGA SPRINGS, NY (1986-1998)
CONVERTED TO DIGITAL FORMAT FROM NAD 27 TO NAD 83 BY WIELER MAPPING, INC. (2002)
CONVERTED TO ESRI GECODATABASE FORMAT BY FOUNTAINS SPITAL, INC. (2007-2008)

THIS MAP HAS BEEN PREPARED FROM MAPS AND DEEDS AND OTHER INFORMATION OF PUBLIC RECORD, IN ACCORDANCE WITH THE PROVISIONS OF THE REAL PROPERTY TAX LAW, FOR ASSESSMENT PURPOSES ONLY.
IT DOES NOT REPRESENT A LAND SURVEY AND MUST NOT BE CONSTRUED AS SUCH.

DESCRIPTIONS OF REAL PROPERTY TAKEN HEREFROM FOR THE PURPOSE OF CONVEYANCE OR TRANSFER, MUST BE LIMITED TO THOSE NECESSARY AND INCIDENTAL TO THE ADMINISTRATION OF THE REAL PROPERTY TAX LAW.

COORDINATES BASED ON
NEW YORK STATE PLANE COORDINATE SYSTEM
EASTERN ZONE NAD 83



SPECIAL DISTRICTS

SCHOOL: SARATOGA SPRINGS CENTRAL 411500
FIRE: HUDON FIRE 1005
AG:
SEWER:

WATER:
LIGHT:
PARK:
LAKE:

PROPERTY LINE
BLOCK LIMIT
SECTION LIMIT
TOWN/VILLAGE/CITY
COUNTY LINE
RAILROAD

GREAT LOT LINE
SUBDIVISION LOT LINE
STATE ROUTE
STREET OR TOWN ROAD

SCHOOL DISTRICT LINE
FIRE DISTRICT LINE
WATER DISTRICT LINE
AGRICULTURAL DISTRICT
LIGHT DISTRICT
NAD 83 TIC LINES

LEGEND

GREAT LOT NUMBER
TAX MAP BLOCK NUMBER
FILED PLAN LOT NUMBER
TAX MAP PARCEL NUMBER
STREAM/WATERBODY

CALCULATED ACREAGE
DEED ACREAGE
SCALED DIMENSION
DEED DIMENSION
COORDINATE LOCATOR
DENOTES COMMON OWNER

9.8 A (C)
8.8 A
150.2
150.2

SHEET INDEX table with columns for map sheet numbers (176.00, 176.00, 177.00) and rows for map sheet numbers (176.00, 176.00, 177.00).



TAX MAP
TOWN OF MILTON
SARATOGA COUNTY, NEW YORK

176.16

TAXABLE STATUS DATE: March 1, 2026 MAP EXPORTED ON: March 12, 2026