

**REAL PROPERTY TAX MAP**

PREPARED FOR: SARATOGA COUNTY BOARD OF SUPERVISORS  
UNDER SUPERVISION OF: REAL PROPERTY TAX SERVICE AGENCY

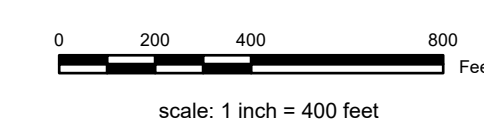
PREPARED BY:  
L. ROBERT KIMBALL CONSULTING ENGINEERS, EBENSBURG, PA (1973-1978)  
CONVERTED TO DIGITAL FORMAT BY THE L.A. GROUP SARATOGA SPRINGS, NY (1996-1998)  
CONVERTED TO DIGITAL FORMAT FROM NAD 27 TO NAD 83 BY WILDER MAPPING, INC. (2002)  
CONVERTED TO ESRI GEODATABASE FORMAT BY FOUNTAINS SPATIAL, INC. (2007-2008)

THIS MAP HAS BEEN PREPARED FROM MAPS AND DEEDS AND OTHER INFORMATION OF PUBLIC RECORD. IN ACCORDANCE WITH THE PROVISIONS OF THE REAL PROPERTY TAX LAW, FOR ASSESSMENT PURPOSES ONLY.

IT DOES NOT REPRESENT A LAND SURVEY AND MUST NOT BE CONSTRUED AS SUCH.

DESCRIPTIONS OF REAL PROPERTY TAKEN HEREFROM FOR THE PURPOSE OF CONVEYANCE OR TRANSFER MUST BE LIMITED TO THOSE NECESSARY AND INCIDENTAL TO THE ADMINISTRATION OF THE REAL PROPERTY TAX LAW.

COORDINATES BASED ON  
NEW YORK STATE PLANE COORDINATE SYSTEM  
EASTERN ZONE NAD 83



**SPECIAL DISTRICTS**

<b>AG:</b>	
<b>FIRE:</b>	HAD3 FIRE PROTECTION FD03
<b>SCHOOL:</b>	BALSTON CENTRAL 4301
<b>SEWER:</b>	

<b>LAKE:</b>	
<b>WATER:</b>	
<b>LIGHT:</b>	
<b>PARK:</b>	

<b>PROPERTY LINE</b>	---
<b>BLOCK LIMIT</b>	---
<b>SECTION LIMIT</b>	---
<b>TOWN VILLAGE CITY</b>	---
<b>COUNTY LINE</b>	---
<b>RAILROAD</b>	---

<b>GREAT LOT LINE</b>	---
<b>SUBDIVISION LOT LINE</b>	---
<b>STATE ROUTE</b>	---
<b>COUNTY ROUTE</b>	---
<b>STREET OR TOWN ROAD</b>	---
<b>SCHOOL DISTRICT LINE</b>	---
<b>FIRE DISTRICT LINE</b>	---
<b>WATER DISTRICT LINE</b>	---
<b>AGRICULTURAL DISTRICT</b>	---
<b>LIGHT DISTRICT</b>	---
<b>NAD 83 TIC LINES</b>	---

**LEGEND**

<b>GREAT LOT NUMBER</b>	(1)
<b>TAX MAP BLOCK NUMBER</b>	(1)
<b>FILED PLAN LOT NUMBER</b>	(1)
<b>TAX MAP PARCEL NUMBER</b>	160.00-3.9
<b>STREAM/WATERBODY</b>	---

<b>CALCULATED ACREAGE</b>	9.8 A (C)
<b>DEED ACREAGE</b>	8.8 A
<b>SCALED DIMENSION</b>	150.2
<b>DEED DIMENSION</b>	150.2
<b>COORDINATE LOCATOR</b>	---
<b>DENOTES COMMON OWNER</b>	---

191.00	204.00
216.00	217.00

SHEET INDEX

**TAX MAP** 203.00  
**TOWN OF MALTA**  
**SARATOGA COUNTY, NEW YORK**  
TAXABLE STATUS DATE: March 1, 2028 MAP EXPORTED ON: March 12, 2028