

REAL PROPERTY TAX MAP

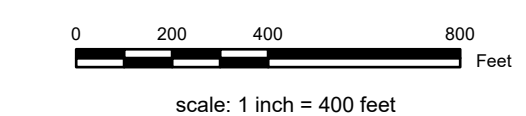
PREPARED FOR: SARATOGA COUNTY BOARD OF SUPERVISORS
 UNDER SUPERVISION OF: REAL PROPERTY TAX SERVICE AGENCY

PREPARED BY:
 L. ROBERT KIMBALL CONSULTING ENGINEERS, ERIEBURG, PA (1973-1978)
 CONVERTED TO DIGITAL FORMAT BY THE L.A. GROUP SARATOGA SPRINGS, NY (1998-1999)
 CONVERTED TO DIGITAL FORMAT FROM NAD 27 TO NAD 83 BY WILSON-MAPPING, INC. (2002)
 CONVERTED TO ESRI GDB/DATABASE FORMAT BY FOUNTAINS SPATIAL, INC. (2007-2008)

THIS MAP HAS BEEN PREPARED FROM MAPS AND DEEDS AND OTHER INFORMATION OF PUBLIC RECORD. IN ACCORDANCE WITH THE PROVISIONS OF THE REAL PROPERTY TAX LAW, FOR ASSESSMENT PURPOSES ONLY.
 IT DOES NOT REPRESENT A LAND SURVEY AND MUST NOT BE CONSTRUED AS SUCH.

DESCRIPTIONS OF REAL PROPERTY TAKEN HEREFROM FOR THE PURPOSE OF CONVEYANCE OR TRANSFER MUST BE LIMITED TO THOSE NECESSARY AND INCIDENTAL TO THE ADMINISTRATION OF THE REAL PROPERTY TAX LAW.

COORDINATES BASED ON
 NEW YORK STATE PLANE COORDINATE SYSTEM
 EASTERN ZONE NAD 83



SPECIAL DISTRICTS

SCHOOL: HOEDAVILLE CENTRAL 41300	FIRE: HALFMOON WATERFORD FIRE FD065
WATER: CONSOLIDATED W/ DIST ZONE 3 WTR00	LIGHT:
AG:	PARK:
LAKE:	SEWER:

PROPERTY LINE

BLOCK LIMIT	GREAT LOT LINE
SECTION LIMIT	SUBDIVISION LOT LINE
TOWN/VILLAGE/CITY	STATE ROUTE
COUNTY LINE	COUNTY ROUTE
RAILROAD	STREET OR TOWN ROAD

LEGEND

SCHOOL DISTRICT LINE	TAX MAP BLOCK NUMBER
FIRE DISTRICT LINE	FILED PLAN LOT NUMBER
WATER DISTRICT LINE	TAX MAP PARCEL NUMBER
AGRICULTURAL DISTRICT	STREAM/WATERBODY
LIGHT DISTRICT	
NAD 83 TIC LINES	

GREAT LOT NUMBER	8.8 A (C)
TAX MAP BLOCK NUMBER	8.8 A
FILED PLAN LOT NUMBER	150 (S)
TAX MAP PARCEL NUMBER	150.2
STREAM/WATERBODY	160.00-3.9

CALCULATED ACREAGE	8.8 A (C)
DEED ACREAGE	8.8 A
SCALED DIMENSION	150 (S)
DEED DIMENSION	150.2
COORDINATE LOCATOR	
DENOTES COMMON OWNER	

273.00	274.00
279.00	
285.00	286.00

SHEET INDEX

TAX MAP 280.00
TOWN OF HALFMOON
 SARATOGA COUNTY, NEW YORK
 TAXABLE STATUS DATE: March 1, 2028
 MAP EXPORTED ON: March 26, 2028