

278.00

WT WT040

236

279.09

279.00

WT WT040

MONMOUTH 279.37c-1

KNOX BOULEVARD

MAYFIELD DRIVE

DETAIL FOR FIRST LEVEL PHASE I & II SCALE 1"=50'

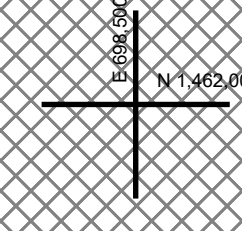
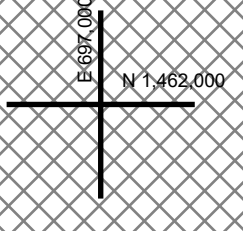
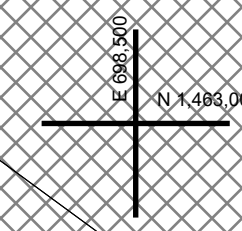
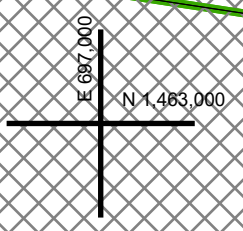
DRIVE

MAYFIELD DRIVE

INDEPENDENCE BOULEVARD

GENERAL'S

GRENAGIER COURT CONDOMINIUMS



PART OF 279.45-2-30-1  
MATCH LINE  
MATCH LINE  
FOR REMAINDER SEE 279.37

PART OF SEE 279.45  
MATCH LINE  
MATCH LINE  
FOR REMAINDER SEE 279.37

FOR REMAINDER SEE 279.45  
MATCH LINE

FOR REMAINDER SEE 279.37  
MATCH LINE

**REAL PROPERTY TAX MAP**

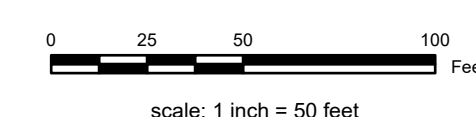
PREPARED FOR: SARATOGA COUNTY BOARD OF SUPERVISORS  
UNDER SUPERVISION OF: REAL PROPERTY TAX SERVICE AGENCY

PREPARED BY:  
L. ROBERT KIMBALL CONSULTING ENGINEERS, EBENSBURG, PA (1973-1978)  
CONVERTED TO DIGITAL FORMAT BY THE L.A. GROUP SARATOGA SPRINGS, NY (1986-1998)  
CONVERTED TO DIGITAL FORMAT FROM NAD 27 TO NAD 83 BY WILSON MAPPING, INC. (2002)  
CONVERTED TO ESRI GDB/DATABASE FORMAT BY FOUNTAINS SPITAL, INC. (2007-2008)

THIS MAP HAS BEEN PREPARED FROM MAPS AND DEEDS AND OTHER INFORMATION OF PUBLIC RECORD, IN ACCORDANCE WITH THE PROVISIONS OF THE REAL PROPERTY TAX LAW, FOR ASSESSMENT PURPOSES ONLY.  
IT DOES NOT REPRESENT A LAND SURVEY AND MUST NOT BE CONSTRUED AS SUCH.

DESCRIPTIONS OF REAL PROPERTY TAKEN HEREFROM FOR THE PURPOSE OF CONVEYANCE OR TRANSFER MUST BE LIMITED TO THOSE NECESSARY AND INCIDENTAL TO THE ADMINISTRATION OF THE REAL PROPERTY TAX LAW.

COORDINATES BASED ON  
NEW YORK STATE PLANE COORDINATE SYSTEM  
EASTERN ZONE NAD 83



**SPECIAL DISTRICTS**

SCHOOL: SHENDEKOWA CENTRAL 41242  
WATER: CONSOLIDATED WT DIST ZONE 3 WT040  
AG:  
LAKE:

PIPE: HALMOON WATERFORD FIRE 4006  
LIGHT:  
PARK:  
SEWER:

PROPERTY LINE  
BLOCK LIMIT  
SECTION LIMIT  
TOWN/VILLAGE/CITY  
COUNTY LINE  
RAILROAD

GREAT LOT LINE  
SUBDIVISION LOT LINE  
STATE ROUTE  
STREET OR TOWN ROAD

**LEGEND**

SCHOOL DISTRICT LINE  
FIRE DISTRICT LINE  
WATER DISTRICT LINE  
AGRICULTURAL DISTRICT  
LIGHT DISTRICT  
NAD 83 TIC LINES

GREAT LOT NUMBER  
TAX MAP BLOCK NUMBER  
FILED PLAN LOT NUMBER  
TAX MAP PARCEL NUMBER  
STREAM/WATERBODY

CALCULATED ACREAGE  
DEED ACREAGE  
SCALED DIMENSION  
DEED DIMENSION  
COORDINATE LOCATOR  
DENOTES COMMON OWNER

S.S.A. (C)  
8.5 A  
150 (S)  
150.2

SHEET INDEX

|        |        |        |
|--------|--------|--------|
| 278.00 | 279.00 | 279.00 |
| 278.12 | 279.09 | 279.09 |
| 278.00 | 279.45 | 279.46 |



**TAX MAP** 279.37c-1  
**TOWN OF HALMOON**  
**SARATOGA COUNTY, NEW YORK**  
TAXABLE STATUS DATE: March 1, 2028 MAP EXPORTED ON: March 20, 2028