

278.00

W/T WT040

236

MONMOUTH 279.37

279.00

W/T WT040

KNOX BOULEVARD

4 1 1.75A

2 5.18A

MONMOUTH WAY CONDOMINIUM II

1

MONMOUTH WAY CONDOMINIUM I 1.80A

SEE DETAIL SHEETS FOR UPPER LEVEL UNITS

2

MONMOUTH WAY CONDOMINIUM II

PART OF SEE 279.46 MATCH LINE FOR REMAINDER SEE 279.37

PART OF 279.45-2-30-1 MATCH LINE FOR REMAINDER SEE 279.37

KNOX BOULEVARD

MAYFIELD DRIVE

MAYFIELD DRIVE

FOR REMAINDER SEE 279.37 MATCH LINE

FOR REMAINDER SEE 279.37 MATCH LINE

GRENAQUIER COURT CONDOMINIUMS

W/T WT040

236

GENERAL'S

INDEPENDENCE BOULEVARD

279.37

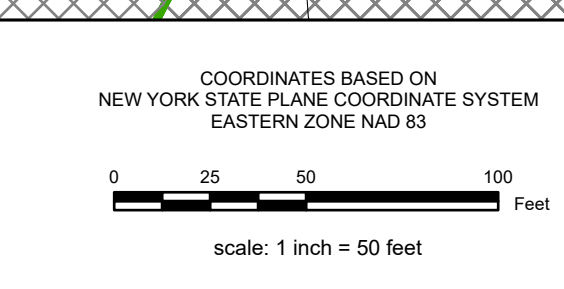
REAL PROPERTY TAX MAP

PREPARED FOR: SARATOGA COUNTY BOARD OF SUPERVISORS
 UNDER SUPERVISION OF: REAL PROPERTY TAX SERVICE AGENCY

PREPARED BY:
 L. ROBERT KIMBALL CONSULTING ENGINEERS, EBENSBURG, PA (1973-1978)
 CONVERTED TO DIGITAL FORMAT BY THE L.A. GROUP SARATOGA SPRINGS, NY (1986-1998)
 CONVERTED TO DIGITAL FORMAT FROM NAD 27 TO NAD 83 BY WILSON MAPPING, INC. (2002)
 CONVERTED TO ESRI GDB/DATABASE FORMAT BY FOUNTAINS SPITAL, INC. (2007-2008)

THIS MAP HAS BEEN PREPARED FROM MAPS AND DEEDS AND OTHER INFORMATION OF PUBLIC RECORD, IN ACCORDANCE WITH THE PROVISIONS OF THE REAL PROPERTY TAX LAW, FOR ASSESSMENT PURPOSES ONLY.
 IT DOES NOT REPRESENT A LAND SURVEY AND MUST NOT BE CONSTRUED AS SUCH.

DESCRIPTIONS OF REAL PROPERTY TAKEN HEREFROM FOR THE PURPOSE OF CONVEYANCE OR TRANSFER MUST BE LIMITED TO THOSE NECESSARY AND INCIDENTAL TO THE ADMINISTRATION OF THE REAL PROPERTY TAX LAW.



SPECIAL DISTRICTS

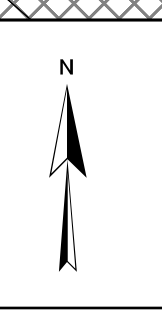
SCHOOL: SHENDEKOWA CENTRAL 41262	FIRE: HALFMOON WATERFORD FIRE 4006	PROPERTY LINE: - - - - -
WATER: CONSOLIDATED WT DIST ZONE 3 WT040	LIGHT: - - - - -	BLOCK LIMIT: - - - - -
AG: - - - - -	PARK: - - - - -	SECTION LIMIT: - - - - -
LAKE: - - - - -	SEWER: - - - - -	TOWN/VILLAGE/CITY: - - - - -
		COUNTY LINE: - - - - -
		RAILROAD: - - - - -

LEGEND

GREAT LOT LINE	- - - - -	SCHOOL DISTRICT LINE	- - - - -	GREAT LOT NUMBER	①
SUBDIVISION LOT LINE	- - - - -	FIRE DISTRICT LINE	- - - - -	TAX MAP BLOCK NUMBER	②
STATE ROUTE	- - - - -	WATER DISTRICT LINE	- - - - -	FILED PLAN LOT NUMBER	③
COUNTY ROUTE	- - - - -	AGRICULTURAL DISTRICT	- - - - -	TAX MAP PARCEL NUMBER	④
STREET OR TOWN ROAD	- - - - -	LIGHT DISTRICT	- - - - -	STREAM/WATERBODY	- - - - -
		NAD 83 TIC LINES	- - - - -		

DEED ACRESAGE	278.02	279.00	279.00
SCALED ACRESAGE	278.00	279.00	279.00
DEED DIMENSION	278.00	279.00	279.00
COORDINATE LOCATOR			
DENOTES COMMON OWNER			

S.S.A. (C)	278.02	279.00	279.00
S.S.A. (A)	278.00	279.00	279.00
S.S.A. (S)	278.00	279.00	279.00
S.S.A. (I)	278.00	279.00	279.00



TAX MAP 279.37
TOWN OF HALFMOON
SARATOGA COUNTY, NEW YORK
 TAXABLE STATUS DATE: March 1, 2028 MAP EXPORTED ON: March 20, 2028