

REAL PROPERTY TAX MAP

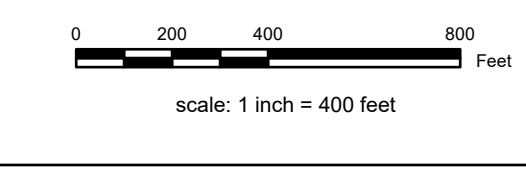
PREPARED FOR: SARATOGA COUNTY BOARD OF SUPERVISORS
 UNDER SUPERVISION OF: REAL PROPERTY TAX SERVICE AGENCY

PREPARED BY:
 L. ROBERT KIMBALL CONSULTING ENGINEERS, EBENSBURG, PA (1973-1978)
 CONVERTED TO DIGITAL FORMAT BY THE L.A. GROUP SARATOGA SPRINGS, NY (1986-1998)
 CONVERTED TO DIGITAL FORMAT FROM NAD 27 TO NAD 83 BY WELLS & WARRING, INC. (2002)
 CONVERTED TO ESRI GEDATABASE FORMAT BY FOUNTAINS SPITAL, INC. (2007-2008)

THIS MAP HAS BEEN PREPARED FROM MAPS AND DEEDS AND OTHER INFORMATION OF PUBLIC RECORD. IN ACCORDANCE WITH THE PROVISIONS OF THE REAL PROPERTY TAX LAW, FOR ASSESSMENT PURPOSES ONLY.
 IT DOES NOT REPRESENT A LAND SURVEY AND MUST NOT BE CONSTRUED AS SUCH.

DESCRIPTIONS OF REAL PROPERTY TAKEN HEREFROM FOR THE PURPOSE OF CONVEYANCE OR TRANSFER, MUST BE LIMITED TO THOSE NECESSARY AND INCIDENTAL TO THE ADMINISTRATION OF THE REAL PROPERTY TAX LAW.

COORDINATES BASED ON
 NEW YORK STATE PLANE COORDINATE SYSTEM
 EASTERN ZONE NAD 83



SPECIAL DISTRICTS

SCHOOL: HOENIGSVILLE CENTRAL 411000	FIRE: HALFMOON WATERFORD FIRE FD005 HALFMOON FIRE #1 FD002
WATER: CONSOLIDATED W/ DIST ZONE 3 W/190	LIGHT:
AG:	PARK:
LAKE:	SEWER:

PROPERTY LINE

BLOCK LIMIT	SECTION LIMIT	TOWN VILLAGE CITY	COUNTY LINE	RAILROAD
-------------	---------------	-------------------	-------------	----------

LEGEND

GREAT LOT LINE	SCHOOL DISTRICT LINE	GREAT LOT NUMBER
SUBDIVISION LOT LINE	FIRE DISTRICT LINE	TAX MAP BLOCK NUMBER
STATE ROUTE	WATER DISTRICT LINE	FILED PLAN LOT NUMBER
COUNTY ROUTE	AGRICULTURAL DISTRICT	TAX MAP PARCEL NUMBER
STREET OR TOWN ROAD	LIGHT DISTRICT	STREAM/WATERBODY
	NAD 83 TIC LINES	

COORDINATE LOCATOR

9.8 A (C)	267.00	268.00
8.8 A	273.00	
150.2	279.00	280.00

SHEET INDEX

TAX MAP 274.00
TOWN OF HALFMOON
 SARATOGA COUNTY, NEW YORK
 TAXABLE STATUS DATE: March 1, 2028
 MAP EXPORTED ON: March 26, 2028