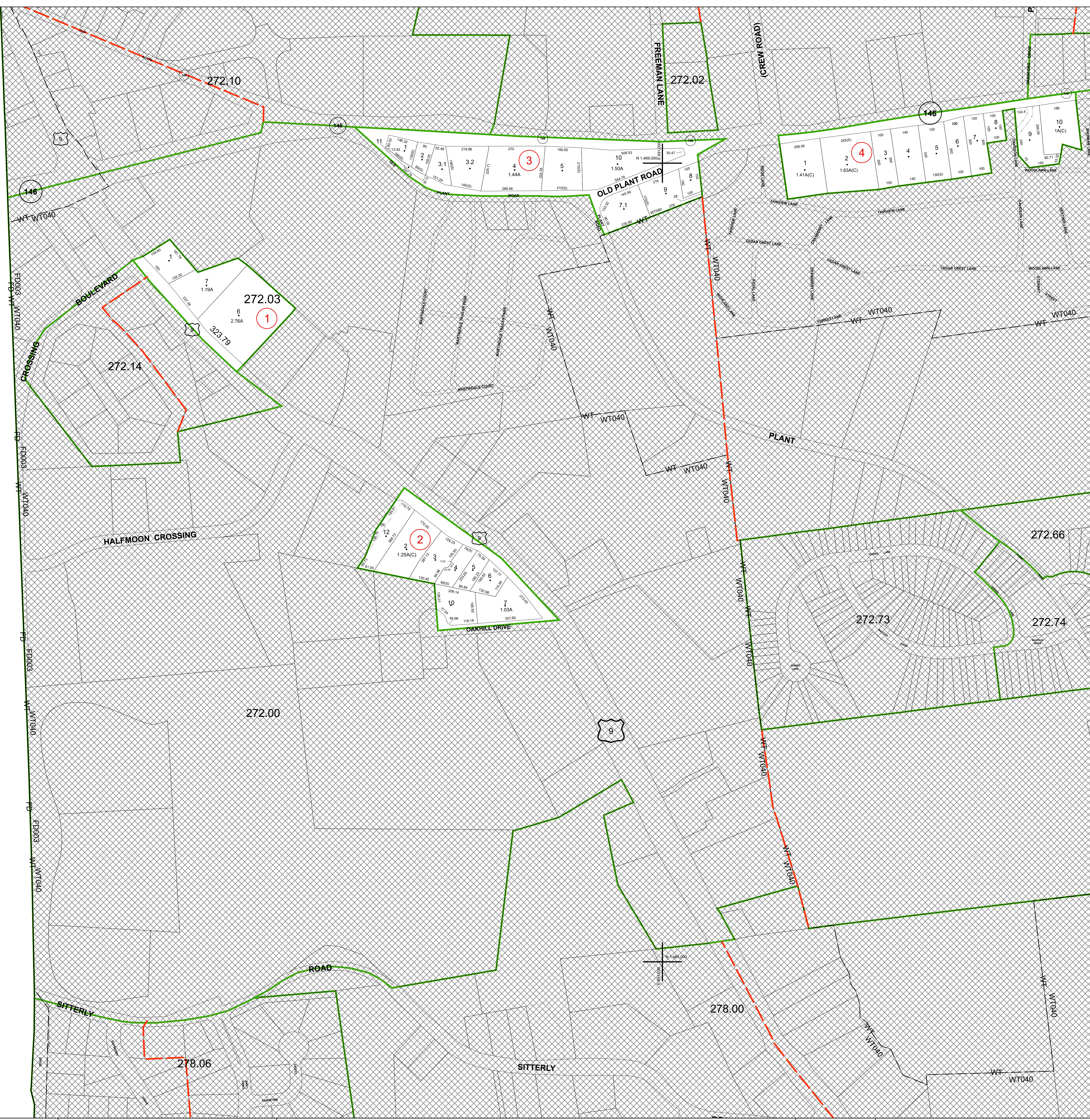


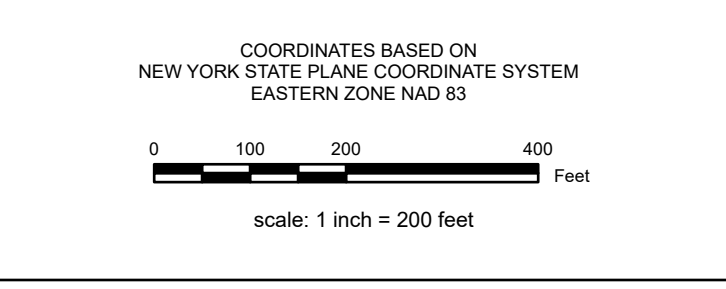
N 1 469,000  
E 685,000

N 1 469,000  
E 685,000



**REAL PROPERTY TAX MAP**  
PREPARED FOR: SARATOGA COUNTY BOARD OF SUPERVISORS  
UNDER SUPERVISION OF: REAL PROPERTY TAX SERVICE AGENCY  
PREPARED BY:  
L. ROBERT KIMBALL CONSULTING ENGINEERS, EBENSBURG, PA (1973-1978)  
CONVERTED TO DIGITAL FORMAT BY THE L.A. GROUP SARATOGA SPRINGS, NY (1986-1998)  
CONVERTED TO DIGITAL FORMAT FROM NAD 27 TO NAD 83 BY WILDER MAPPING, INC. (2002)  
CONVERTED TO ESRI GEODATABASE FORMAT BY FOUNTAINS SPATIAL, INC. (2007-2008)

THIS MAP HAS BEEN PREPARED FROM MAPS AND DEEDS AND OTHER INFORMATION OF PUBLIC RECORD. IN ACCORDANCE WITH THE PROVISIONS OF THE REAL PROPERTY TAX LAW, FOR ASSESSMENT PURPOSES ONLY.  
IT DOES NOT REPRESENT A LAND SURVEY AND MUST NOT BE CONSTRUED AS SUCH.  
DESCRIPTIONS OF REAL PROPERTY TAKEN HEREFROM FOR THE PURPOSE OF CONVEYANCE OR TRANSFER MUST BE LIMITED TO THOSE NECESSARY AND INCIDENTAL TO THE ADMINISTRATION OF THE REAL PROPERTY TAX LAW.



SPECIAL DISTRICTS	
SCHOOL: SHENDEKOWA CENTRAL 41262	FIRE: CLIFTON PARK-HALFMOON FIRE FD03
WATER: CONSOLIDATED WT DIST ZONE 3 WT040	LIGHT:
AG:	PARK:
LAKE:	SEWER:

PROPERTY LINE	
BLOCK LIMIT	SECTION LIMIT
TOWN/VILLAGE/CITY	COUNTY LINE
RAILROAD	

LEGEND	
GREAT LOT LINE	SCHOOL DISTRICT LINE
SUBDIVISION LOT LINE	FIRE DISTRICT LINE
STATE ROUTE	WATER DISTRICT LINE
STREET OR TOWN ROAD	AGRICULTURAL DISTRICT
	LIGHT DISTRICT
	NAD 83 TIC LINES

GREAT LOT NUMBER	
TAX MAP BLOCK NUMBER	150.2
FILED PLAN LOT NUMBER	150.2
TAX MAP PARCEL NUMBER	150.2
STREAM/WATERBODY	

**TAX MAP 272.03**

**TOWN OF HALFMOON**  
SARATOGA COUNTY, NEW YORK

TAXABLE STATUS DATE: March 1, 2028 MAP EXPORTED ON: March 20, 2028