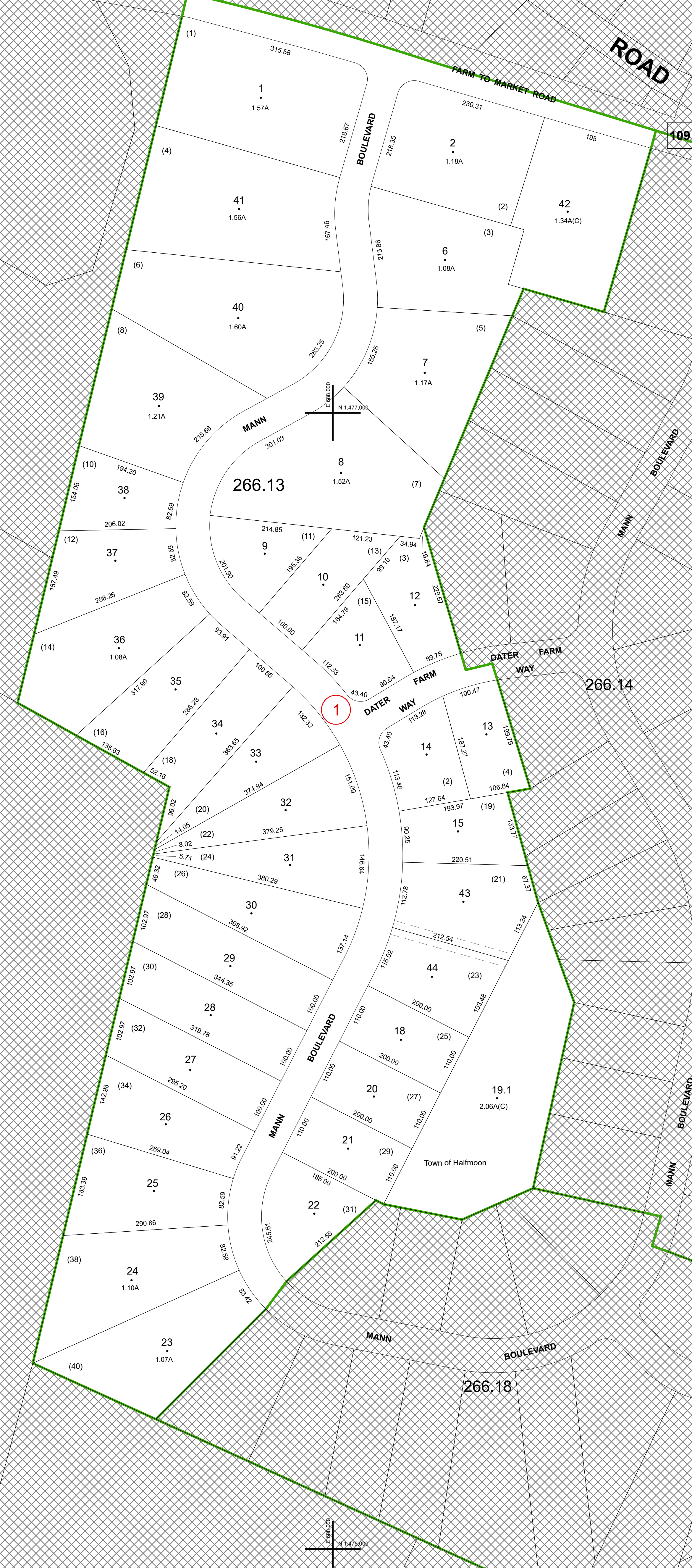


FD FD003
WT WT040
FD FD003
WT WT040



109

266.14

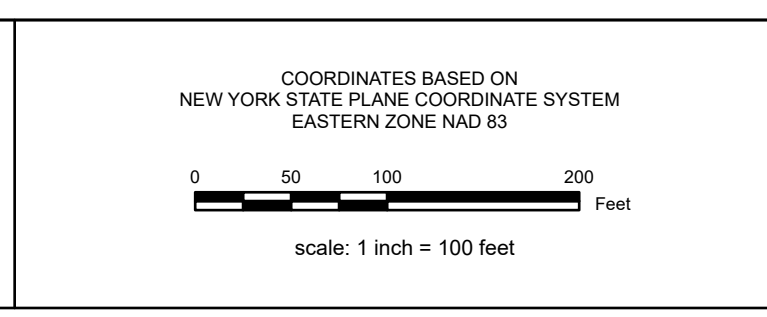
266.00

266.18

TAX MAP 266.13
TOWN OF HALFMOON
SARATOGA COUNTY, NEW YORK
TAXABLE STATUS DATE: March 1, 2028 MAP EXPORTED ON: March 20, 2028

REAL PROPERTY TAX MAP
PREPARED FOR: SARATOGA COUNTY BOARD OF SUPERVISORS
UNDER SUPERVISION OF: REAL PROPERTY TAX SERVICE AGENCY
PREPARED BY: L. ROBERT KIMBALL CONSULTING ENGINEERS, EBENESBURG, PA (1973-1978)
CONVERTED TO DIGITAL FORMAT BY THE L.A. GROUP SARATOGA SPRINGS, NY (1986-1998)
CONVERTED TO DIGITAL FORMAT FROM NAD 27 TO NAD 83 BY WILDER MAPPING, INC. (2002)
CONVERTED TO ESRI GEODATABASE FORMAT BY FOUNTAINS SPATIAL, INC. (2007-2008)

THIS MAP HAS BEEN PREPARED FROM MAPS AND DEEDS AND OTHER INFORMATION OF PUBLIC RECORD. IN ACCORDANCE WITH THE PROVISION OF THE REAL PROPERTY TAX LAW, FOR ASSESSMENT PURPOSES ONLY.
IT DOES NOT REPRESENT A LAND SURVEY AND MUST NOT BE CONSTRUED AS SUCH.
DESCRIPTIONS OF REAL PROPERTY TAKEN HEREFROM FOR THE PURPOSE OF CONVEYANCE OR TRANSFER MUST BE LIMITED TO THOSE NECESSARY AND INCIDENTAL TO THE ADMINISTRATION OF THE REAL PROPERTY TAX LAW.



SPECIAL DISTRICTS	
SCHOOL: SHENDEKOWA CENTRAL 41242	FIRE: CLIFTON FARM-HALFMOON FIRE FD03
WATER: CONSOLIDATED WT DIST ZONE 3 WT040	LIGHT:
AG:	PARK:
LAKE:	SEWER:

PROPERTY LINE		LEGEND	
PROPERTY LINE	---	GREAT LOT LINE	---
BLOCK LIMIT	---	SUBDIVISION LOT LINE	---
SECTION LIMIT	---	STATE ROUTE	(R)
TOWN/VILLAGE/CITY	---	COUNTY ROUTE	(R)
COUNTY LINE	---	STREET OR TOWN ROAD	---
RAILROAD	---	SCHOOL DISTRICT LINE	---
		FIRE DISTRICT LINE	---
		WATER DISTRICT LINE	---
		AGRICULTURAL DISTRICT	---
		LIGHT DISTRICT	---
		NAD 83 TIC LINES	---

GREAT LOT NUMBER	1	CALCULATED ACREAGE	8.8 A (C)
TAX MAP BLOCK NUMBER	109	DEED ACREAGE	8.8 A
FILED PLAN LOT NUMBER	1	SCALED DIMENSION	150 (S)
TAX MAP PARCEL NUMBER	160.00-3-9	DEED DIMENSION	150 (S)
STREAM/WATERBODY		COORDINATE LOCATOR	
		DENOTES COMMON OWNER	

SHEET INDEX	
266.00	266.01
266.02	266.03
266.04	266.05
266.06	266.07
266.08	266.09
266.10	266.11
266.12	266.13
266.14	266.15
266.16	266.17
266.18	266.19