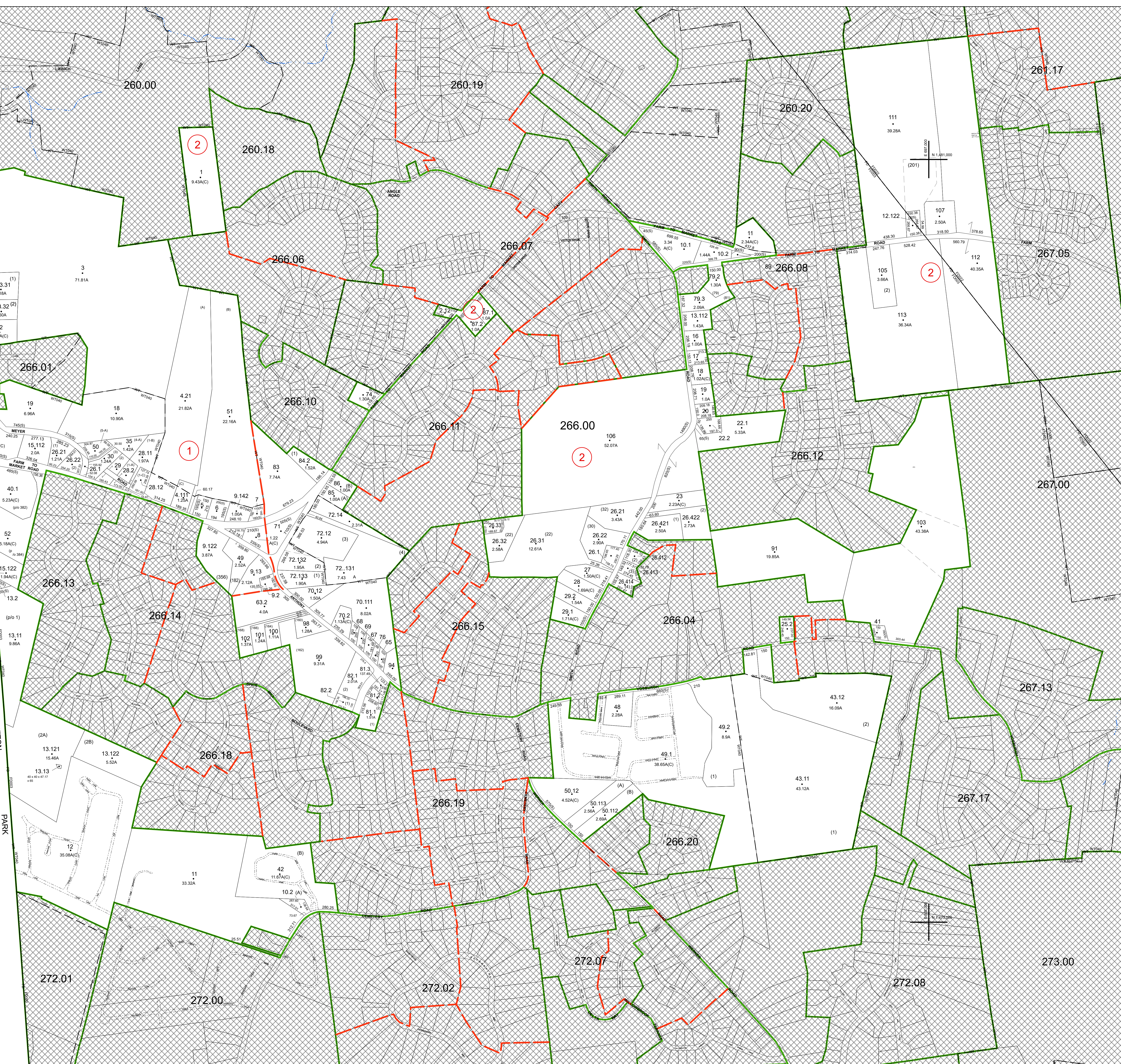


SYNERGY PARK DRIVE (PRIVATE)
 23.11 (1)
 23.31 (1)
 23.2 (2)
 23.32 (2)
 22 (1.90A(C))
 19 (6.90A)
 18 (10.90A)
 15.112 (1.21A)
 26.21 (2.0A)
 26.22 (2.0A)
 25.1 (POB) (25(S))
 25.2 (POA) (19(S)X5(S)X20(S))

TOWN OF HALFMOON
 CLIFTON PARK



COORDINATES BASED ON
 NEW YORK STATE PLANE COORDINATE SYSTEM
 EASTERN ZONE NAD 83
 0 200 400 800 Feet
 scale: 1 inch = 400 feet

SPECIAL DISTRICTS	
SCHOOL: SHENDEKOWA CENTRAL 41242	FIRE: CLIFTON PARK-HALFMOON FIRE FD03 FD02
WATER: CONSOLIDATED W/ DIST ZONE 3 W/90	LIGHT:
AG:	PARK:
LAKE:	SEWER:

PROPERTY LINE	
BLOCK LIMIT	SECTION LIMIT
TOWN/VILLAGE/CITY	COUNTY LINE
RAILROAD	

LEGEND	
GREAT LOT LINE	SCHOOL DISTRICT LINE
SUBDIVISION LOT LINE	FIRE DISTRICT LINE
STATE ROUTE	WATER DISTRICT LINE
COUNTY ROUTE	AGRICULTURAL DISTRICT
STREET OR TOWN ROAD	LIGHT DISTRICT
	NAD 83 TIC LINES

GREAT LOT NUMBER	
TAX MAP BLOCK NUMBER	FILED PLAN LOT NUMBER
TAX MAP PARCEL NUMBER	TAX MAP PARCEL NUMBER
STREAM/WATERBODY	

CALCULATED ACREAGE	
DEED ACREAGE	9.8 A (C)
SCALED DIMENSION	8.8 A
DEED DIMENSION	150 (S)
COORDINATE LOCATOR	150.2
DENOTES COMMON OWNER	

TAX MAP 266.00

TOWN OF HALFMOON
 SARATOGA COUNTY, NEW YORK

TAXABLE STATUS DATE: March 1, 2028 MAP EXPORTED ON: March 26, 2028

REAL PROPERTY TAX MAP
 SARATOGA COUNTY BOARD OF SUPERVISORS
 UNDER SUPERVISION OF: REAL PROPERTY TAX SERVICE AGENCY

PREPARED BY:
 L. ROBERT KIMBALL CONSULTING ENGINEERS, EBENSBURG, PA (1973-1978)
 CONVERTED TO DIGITAL FORMAT BY THE L.A. GROUP SARATOGA SPRINGS, NY (1986-1998)
 CONVERTED TO DIGITAL FORMAT FROM NAD 27 TO NAD 83 BY WILSON MAPPING, INC. (2002)
 CONVERTED TO ESRI GECODATABASE FORMAT BY FOUNTAINS SPATIAL, INC. (2007-2008)

THIS MAP HAS BEEN PREPARED FROM MAPS AND DEEDS AND OTHER INFORMATION OF PUBLIC RECORD. IN ACCORDANCE WITH THE PROVISIONS OF THE REAL PROPERTY TAX LAW, FOR ASSESSMENT PURPOSES ONLY.

IT DOES NOT REPRESENT A LAND SURVEY AND MUST NOT BE CONSTRUED AS SUCH.

DESCRIPTIONS OF REAL PROPERTY TAKEN HEREFROM FOR THE PURPOSE OF CONVEYANCE OR TRANSFER MUST BE LIMITED TO THOSE NECESSARY AND INCIDENTAL TO THE ADMINISTRATION OF THE REAL PROPERTY TAX LAW.