

**REAL PROPERTY TAX MAP**

PREPARED FOR: SARATOGA COUNTY BOARD OF SUPERVISORS  
UNDER SUPERVISION OF: REAL PROPERTY TAX SERVICE AGENCY

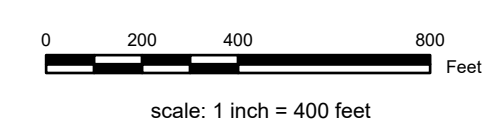
PREPARED BY:  
L. ROBERT KIMBALL CONSULTING ENGINEERS, ERIENBURG, PA. (1973-1978)  
CONVERTED TO DIGITAL FORMAT BY THE L.A. GROUP, SARATOGA SPRINGS, NY (1996-1998)  
CONVERTED TO DIGITAL FORMAT FROM NAD 27 TO NAD 83 BY WELER MAPPING, INC. (2002)  
CONVERTED TO ESRri GEODATABASE FORMAT BY COUNTESS SPINAL, INC. (2017-2020)

THIS MAP HAS BEEN PREPARED FROM MAPS AND DEEDS AND OTHER INFORMATION OF PUBLIC RECORD. IN ACCORDANCE WITH THE PROVISIONS OF THE REAL PROPERTY TAX LAW, FOR ASSESSMENT PURPOSES ONLY.

IT DOES NOT REPRESENT A LAND SURVEY AND MUST NOT BE CONSTRUED AS SUCH.

DESCRIPTIONS OF REAL PROPERTY TAKEN HEREFROM FOR THE PURPOSE OF CONVEYANCE OR TRANSFER, MUST BE LIMITED TO THOSE NECESSARY AND INCIDENTAL TO THE ADMINISTRATION OF THE REAL PROPERTY TAX LAW.

COORDINATES BASED ON  
NEW YORK STATE PLANE COORDINATE SYSTEM  
EASTERN ZONE NAD 83



**SPECIAL DISTRICTS**

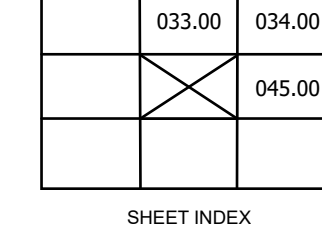
<b>AD:</b>	<b>LIKE:</b>
<b>FIRE:</b> HADLEY-LUZERNE FIRE FD007	<b>WATER:</b>
<b>SCHOOL:</b> COUNTY CENTRAL 423601 HADLEY-LUZERNE CENTRAL 523201	<b>LIGHT:</b>
<b>SEWER:</b>	<b>PARK:</b>

PROPERTY LINE	---
BLOCK LIMIT	---
SECTION LIMIT	---
TOWN VILLAGE CITY	---
COUNTY LINE	---
RAILROAD	---

**LEGEND**

GREAT LOT LINE	---	SCHOOL DISTRICT LINE	---	GREAT LOT NUMBER	①	CALCULATED ACREAGE	9.5 A (C)
SUBDIVISION LOT LINE	---	FIRE DISTRICT LINE	---	TAX MAP BLOCK NUMBER	②	DEED ACREAGE	9.5 A
STATE ROUTE	---	WATER DISTRICT LINE	---	FILED PLAN LOT NUMBER	③	SCALED DIMENSION	150 (S)
COUNTY ROUTE	---	AGRICULTURAL DISTRICT	---	TAX MAP PARCEL NUMBER	④	DEED DIMENSION	150.2
STREET OR TOWN ROAD	---	LIGHT DISTRICT	---	STREAM/WATERBODY	---	COORDINATE LOCATOR	•
		NAD 83 TIC LINES	---			DENOTES COMMON OWNER	---

**TAX MAP**



**TOWN OF HADLEY**  
SARATOGA COUNTY, NEW YORK  
TAXABLE STATUS DATE: March 1, 2028  
MAP EXPORTED ON: March 17, 2028