

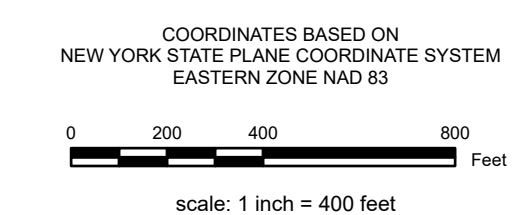
REAL PROPERTY TAX MAP

PREPARED FOR: SARATOGA COUNTY BOARD OF SUPERVISORS
 UNDER SUPERVISION OF: REAL PROPERTY TAX SERVICE AGENCY

PREPARED BY:
 ROBERT KIMBALL CONSULTING ENGINEERS, EDENBURG, PA (1973-1978)
 CONVERTED TO DIGITAL FORMAT BY THE L.A. GROUP, SARATOGA SPRINGS, NY (1996-1998)
 CONVERTED TO DIGITAL FORMAT FROM NAD 27 TO NAD 83 BY WELER MAPPING, INC. (2002)
 CONVERTED TO ERSI GEOGRAPHIC FORMAT BY COLEMAN SPINAL, INC. (2007-2009)

THIS MAP HAS BEEN PREPARED FROM MAPS AND DEEDS AND OTHER INFORMATION OF PUBLIC RECORD. IN ACCORDANCE WITH THE PROVISIONS OF THE REAL PROPERTY TAX LAW, FOR ASSESSMENT PURPOSES ONLY.
 IT DOES NOT REPRESENT A LAND SURVEY AND MUST NOT BE CONSTRUED AS SUCH.

DESCRIPTIONS OF REAL PROPERTY TAKEN HEREFROM FOR THE PURPOSE OF CONVEYANCE OR TRANSFER, MUST BE LIMITED TO THOSE NECESSARY AND INCIDENTAL TO THE ADMINISTRATION OF THE REAL PROPERTY TAX LAW.



COORDINATES BASED ON
 NEW YORK STATE PLANE COORDINATE SYSTEM
 EASTERN ZONE NAD 83

SPECIAL DISTRICTS

AD: HADLEY LIGHTING DISTRICT 70007	LINE: WATER/HADLEY WATER W1009
FIRE: HADLEY LIGHTING DISTRICT 70007	WATER: HADLEY WATER W1009
SCHOOL: HADLEY LIGHTING DISTRICT 70007	LIGHT: HADLEY LIGHT L1014
SEWER: HADLEY SEWER 50009	PARK:

PROPERTY LINE

BLOCK LIMIT	---
SECTION LIMIT	---
TOWN/VILLAGE/CITY	---
COUNTY LINE	---
RAILROAD	---

GREAT LOT LINE

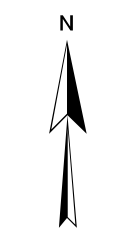
SUBDIVISION LOT LINE	---
STATE ROUTE	---
COUNTY ROUTE	---
STREET OR TOWN ROAD	---

LEGEND

SCHOOL DISTRICT LINE	---
FIRE DISTRICT LINE	---
WATER DISTRICT LINE	---
AGRICULTURAL DISTRICT	---
LIGHT DISTRICT	---
NAD 83 TIC LINES	---

GREAT LOT NUMBER	①
TAX MAP BLOCK NUMBER	②
FILED PLAN LOT NUMBER	③
TAX MAP PARCEL NUMBER	④
STREAM/WATERBODY	⑤

CALCULATED ACREAGE	9.5 A (C)
DEED ACREAGE	9.5 A
SCALED DIMENSION	150 (S)
DEED DIMENSION	150.2
COORDINATE LOCATOR	⑥
DENOTES COMMON OWNER	⑦



TAX MAP
TOWN OF HADLEY
 SARATOGA COUNTY, NEW YORK
 TAXABLE STATUS DATE: March 1, 2028
 MAP EXPORTED ON: March 17, 2028

027.00

SHEET INDEX