

REAL PROPERTY TAX MAP

PREPARED FOR: SARATOGA COUNTY BOARD OF SUPERVISORS
UNDER SUPERVISION OF: REAL PROPERTY TAX SERVICE AGENCY

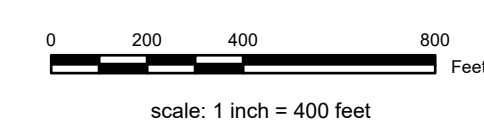
PREPARED BY:
L. ROBERT KIMBALL CONSULTING ENGINEERS, EBENSBURG, PA (1973-1978)
CONVERTED TO DIGITAL FORMAT BY THE L.A. GROUP SARATOGA SPRINGS, NY (1996-1998)
CONVERTED TO DIGITAL FORMAT FROM NAD 27 TO NAD 83 BY WILDERMAPPING, INC. (2002)
CONVERTED TO ESRI GECODATABASE FORMAT BY FOUNTAINS SPATIAL, INC. (2007-2008)

THIS MAP HAS BEEN PREPARED FROM MAPS AND DEEDS AND OTHER INFORMATION OF PUBLIC RECORD. IN ACCORDANCE WITH THE PROVISION OF THE REAL PROPERTY TAX LAW, FOR ASSESSMENT PURPOSES ONLY.

IT DOES NOT REPRESENT A LAND SURVEY AND MUST NOT BE CONSTRUED AS SUCH.

DESCRIPTIONS OF REAL PROPERTY TAKEN HEREFROM FOR THE PURPOSE OF CONVEYANCE OR TRANSFER MUST BE LIMITED TO THOSE NECESSARY AND INCIDENTAL TO THE ADMINISTRATION OF THE REAL PROPERTY TAX LAW.

COORDINATES BASED ON
NEW YORK STATE PLANE COORDINATE SYSTEM
EASTERN ZONE NAD 83



SPECIAL DISTRICTS

SCHOOL: SARATOGA SPRINGS CENTRAL 411500
FIRE: GREENFIELD-WILTON FIRE 10006
AG:
LAKE:

WATER:
LIGHT:
SEWER:
PARK:

PROPERTY LINE
BLOCK LIMIT
SECTION LIMIT
TOWN/VILLAGE/CITY
COUNTY LINE
RAILROAD

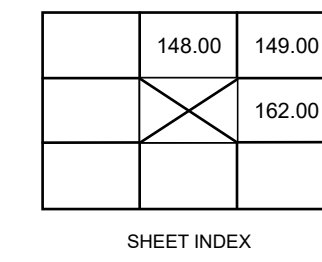
GREAT LOT LINE
SUBDIVISION LOT LINE
STATE ROUTE
COUNTY ROUTE
STREET OR TOWN ROAD

SCHOOL DISTRICT LINE
FIRE DISTRICT LINE
WATER DISTRICT LINE
AGRICULTURAL DISTRICT
LIGHT DISTRICT
NAD 83 TIC LINES

LEGEND

GREAT LOT NUMBER
TAX MAP BLOCK NUMBER
FILED PLAN LOT NUMBER
TAX MAP PARCEL NUMBER
STREAM/WATERBODY

CALCULATED ACREAGE
DEED ACREAGE
SCALED DIMENSION
DEED DIMENSION
COORDINATE LOCATOR
IDENTIFIES COMMON OWNER



TAX MAP **161.00**

TOWN OF GREENFIELD
SARATOGA COUNTY, NEW YORK

TAXABLE STATUS DATE: March 1, 2028 MAP EXPORTED ON: March 12, 2028