

REAL PROPERTY TAX MAP

PREPARED FOR: SARATOGA COUNTY BOARD OF SUPERVISORS
 UNDER SUPERVISION OF: REAL PROPERTY TAX SERVICE AGENCY

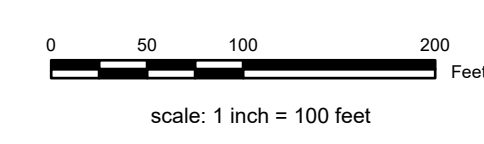
PREPARED BY:
 L. ROBERT KIMBALL CONSULTING ENGINEERS, EDINBURG, PA (1973-1978)
 CONVERTED TO DIGITAL FORMAT BY THE L.A. GROUP SARATOGA SPRINGS, NY (1986-1998)
 CONVERTED TO DIGITAL FORMAT FROM NAD 27 TO NAD 83 BY WILSON MAPPING, INC. (2002)
 CONVERTED TO ESRI GECODATABASE FORMAT BY FOUNTAINS SPITAL, INC. (2007-2008)

THIS MAP HAS BEEN PREPARED FROM MAPS AND DEEDS AND OTHER INFORMATION OF PUBLIC RECORD. IN ACCORDANCE WITH THE PROVISIONS OF THE REAL PROPERTY TAX LAW, FOR ASSESSMENT PURPOSES ONLY.

IT DOES NOT REPRESENT A LAND SURVEY AND MUST NOT BE CONSTRUED AS SUCH.

DESCRIPTIONS OF REAL PROPERTY TAKEN HEREFROM FOR THE PURPOSE OF CONVEYANCE OR TRANSFER MUST BE LIMITED TO THOSE NECESSARY AND INCIDENTAL TO THE ADMINISTRATION OF THE REAL PROPERTY TAX LAW.

COORDINATES BASED ON
 NEW YORK STATE PLANE COORDINATE SYSTEM
 EASTERN ZONE NAD 83



SPECIAL DISTRICTS

AG:	LAKE:
FIRE: EDINBURG FIRE 10019	WATER:
SCHOOL: EDINBURG CONSOLIDATED 41301	LIGHT:
SEWER:	PARK:

PROPERTY LINE

BLOCK LIMIT	GREAT LOT LINE
SECTION LIMIT	SUBDIVISION LOT LINE
TOWN/VILLAGE/CITY	STATE ROUTE
COUNTY LINE	COUNTY ROUTE
RAILROAD	STREET OR TOWN ROAD

LEGEND

SCHOOL DISTRICT LINE	FIRE DISTRICT LINE	WATER DISTRICT LINE	AGRICULTURAL DISTRICT	LIGHT DISTRICT	NAD 83 TIC LINES
STREET OR TOWN ROAD	MAIN ST				

GREAT LOT NUMBER	TAX MAP BLOCK NUMBER	FILED PLAN LOT NUMBER	TAX MAP PARCEL NUMBER	STREAM/WATERBODY
1	068.00	068.00	160.00-3.9	

CALCULATED ACREAGE	9.9 A (C)
DEED ACREAGE	9.9 A
SCALED DIMENSION	150.2
DEED DIMENSION	150.2
COORDINATE LOCATOR	
DENOTES COMMON OWNER	

068.00	068.07	068.00
068.00	068.00	068.00
068.00	068.15	068.00

SHEET INDEX

TAX MAP **068.11**

TOWN OF EDINBURG
SARATOGA COUNTY, NEW YORK

TAXABLE STATUS DATE: March 1, 2028 MAP EXPORTED ON: March 17, 2028