

FD FD019

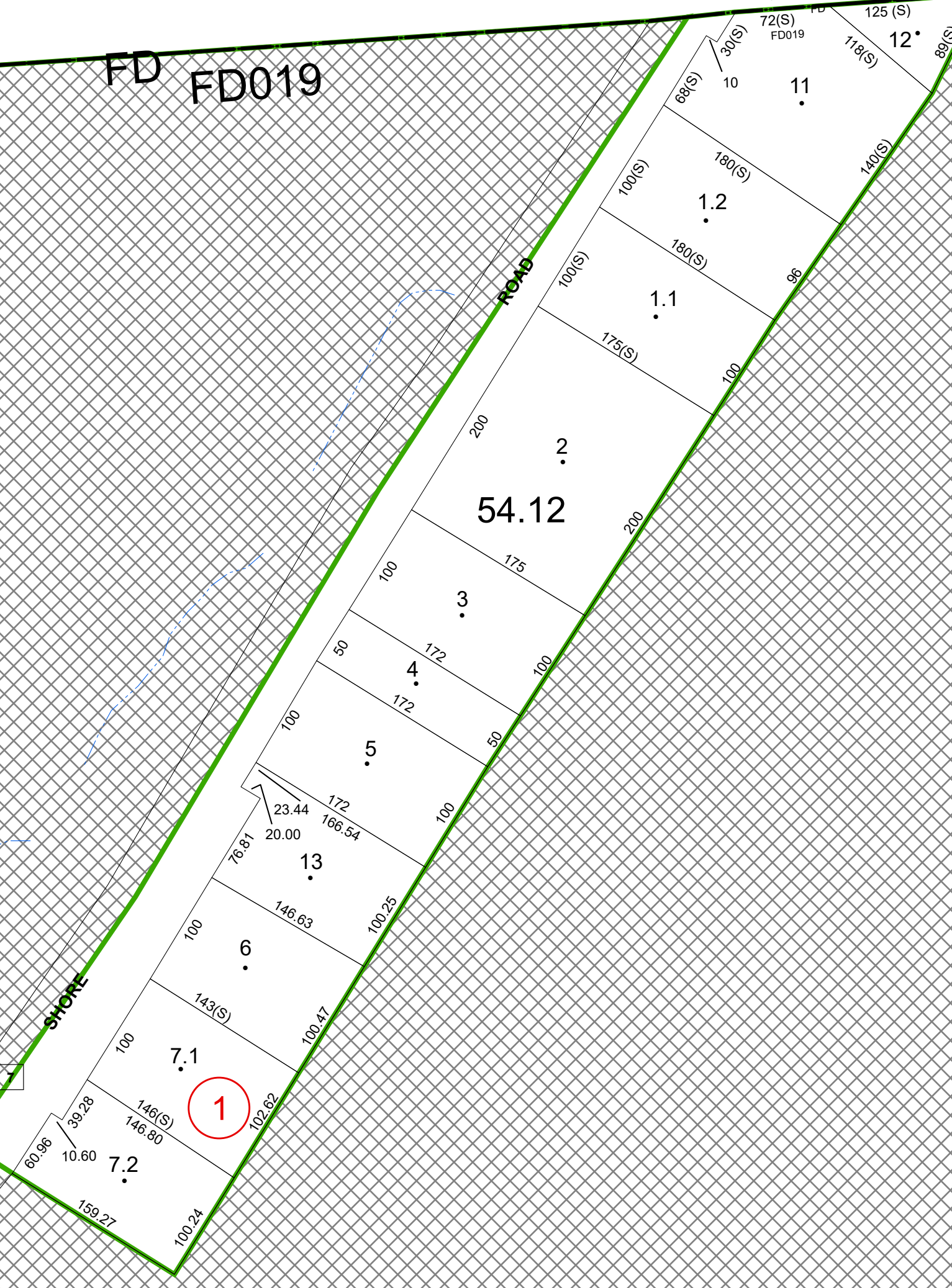
FD FD019

TOWN OF DAY

FD FD019

FD FD019

054.00



54.12

055.00



54.12

**REAL PROPERTY TAX MAP**

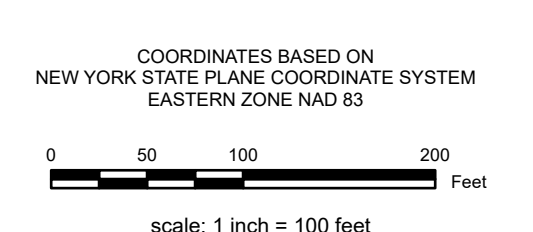
PREPARED FOR: SARATOGA COUNTY BOARD OF SUPERVISORS

UNDER SUPERVISION OF: REAL PROPERTY TAX SERVICE AGENCY

PREPARED BY:  
L. ROBERT KIMBALL CONSULTING ENGINEERS, EBENSBURG, PA (1973-1978)  
CONVERTED TO DIGITAL FORMAT BY THE L.A. GRODUP SARATOGA SPRINGS, NY (1986-1998)  
CONVERTED TO DIGITAL FORMAT FROM NAD 27 TO NAD 83 BY WELLS & WELLS, INC. (2002)  
CONVERTED TO ESRI GECODATABASE FORMAT BY FOUNTAINS SPITAL, INC. (2007-2008)

THIS MAP HAS BEEN PREPARED FROM MAPS AND DEEDS AND OTHER INFORMATION OF PUBLIC RECORD, IN ACCORDANCE WITH THE PROVISIONS OF THE REAL PROPERTY TAX LAW, FOR ASSESSMENT PURPOSES ONLY.  
IT DOES NOT REPRESENT A LAND SURVEY AND MUST NOT BE CONSTRUED AS SUCH.

DESCRIPTIONS OF REAL PROPERTY TAKEN HEREFROM FOR THE PURPOSE OF CONVEYANCE OR TRANSFER, MUST BE LIMITED TO THOSE NECESSARY AND INCIDENTAL TO THE ADMINISTRATION OF THE REAL PROPERTY TAX LAW.



**SPECIAL DISTRICTS**

<b>AG:</b>	<b>LAKE:</b>
<b>FIRE:</b> EDINBURG FIRE FD019	<b>WATER:</b>
<b>SCHOOL:</b> EDINBURG CONSOLIDATED 41301	<b>LIGHT:</b>
<b>SEWER:</b>	<b>PARK:</b>

<b>PROPERTY LINE</b>	<b>GREAT LOT LINE</b>
<b>BLOCK LIMIT</b>	<b>SUBDIVISION LOT LINE</b>
<b>SECTION LIMIT</b>	<b>STATE ROUTE</b>
<b>TOWN/VILLAGE/CITY</b>	<b>COUNTY ROUTE</b>
<b>COUNTY LINE</b>	<b>STREET OR TOWN ROAD</b>
<b>RAILROAD</b>	<b>MAIN ST</b>

**LEGEND**

<b>SCHOOL DISTRICT LINE</b>	<b>AGRICULTURAL DISTRICT</b>
<b>FIRE DISTRICT LINE</b>	<b>LIGHT DISTRICT</b>
<b>WATER DISTRICT LINE</b>	<b>NAD 83 TIC LINES</b>
<b>STATE ROUTE</b>	
<b>COUNTY ROUTE</b>	
<b>STREET OR TOWN ROAD</b>	
<b>MAIN ST</b>	

<b>GREAT LOT NUMBER</b>	<b>TAX MAP BLOCK NUMBER</b>
<b>FILED PLAN LOT NUMBER</b>	<b>TAX MAP PARCEL NUMBER</b>
<b>COORDINATE LOCATOR</b>	<b>STREAM/WATERBODY</b>
<b>IDENTIFIES COMMON OWNER</b>	

<b>CALCULATED ACREAGE</b>	<b>S.S.A (C)</b>
<b>DEED ACREAGE</b>	<b>S.S.A</b>
<b>SCALED DIMENSION</b>	<b>150 (S)</b>
<b>DEED DIMENSION</b>	<b>150.2</b>
<b>COORDINATE LOCATOR</b>	
<b>IDENTIFIES COMMON OWNER</b>	

054.07	054.00	055.00
054.00	054.00	055.00
054.00	054.00	055.00

SHEET INDEX



**TAX MAP**  
**TOWN OF EDINBURG**  
**SARATOGA COUNTY, NEW YORK**  
TAXABLE STATUS DATE: March 1, 2028 MAP EXPORTED ON: March 17, 2028

054.12