

REAL PROPERTY TAX MAP

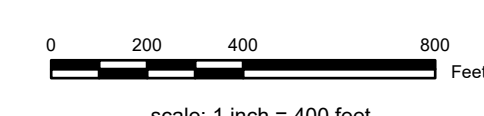
PREPARED FOR: SARATOGA COUNTY BOARD OF SUPERVISORS
 UNDER SUPERVISION OF: REAL PROPERTY TAX SERVICE AGENCY

PREPARED BY:
 L. ROBERT KIMBALL CONSULTING ENGINEERS, EDINBURG, PA (1973-1978)
 CONVERTED TO DIGITAL FORMAT BY THE L.A. GROUP SARATOGA SPRINGS, NY (1998-1999)
 CONVERTED TO DIGITAL FORMAT FROM NAD 27 TO NAD 83 BY WELER-MAPPING, INC. (2002)
 CONVERTED TO ESRI GEDATABASE FORMAT BY FOUNTAINS SPITAL, INC. (2007-2008)

THIS MAP HAS BEEN PREPARED FROM MAPS AND DEEDS AND OTHER INFORMATION OF PUBLIC RECORD. IN ACCORDANCE WITH THE PROVISIONS OF THE REAL PROPERTY TAX LAW, FOR ASSESSMENT PURPOSES ONLY.
 IT DOES NOT REPRESENT A LAND SURVEY AND MUST NOT BE CONSTRUED AS SUCH.

DESCRIPTIONS OF REAL PROPERTY TAKEN HEREFROM FOR THE PURPOSE OF CONVEYANCE OR TRANSFER, MUST BE LIMITED TO THOSE NECESSARY AND INCIDENTAL TO THE ADMINISTRATION OF THE REAL PROPERTY TAX LAW.

COORDINATES BASED ON
 NEW YORK STATE PLANE COORDINATE SYSTEM
 EASTERN ZONE NAD 83



SPECIAL DISTRICTS

AG:	WATER:
FIRE: EDINBURG FIRE 10019	LIGHT:
SCHOOL: EDINBURG CONSOLIDATED 413001	PARK:
SEWER:	

PROPERTY LINE

BLOCK LIMIT	GREAT LOT LINE
SECTION LIMIT	SUBDIVISION LOT LINE
TOWN VILLAGE CITY	STATE ROUTE
COUNTY LINE	COUNTY ROUTE
RAILROAD	STREET OR TOWN ROAD

LEGEND

SCHOOL DISTRICT LINE	---
FIRE DISTRICT LINE	---
WATER DISTRICT LINE	---
AGRICULTURAL DISTRICT	---
LIGHT DISTRICT	---
NAD 83 TIC LINES	---
STREAM/WATERBODY	---
TAX MAP BLOCK NUMBER	①
FILED PLAN LOT NUMBER	②
TAX MAP PARCEL NUMBER	③
STREET/TOWN ROAD	---
MAIN ST	---

CALCULATED ACREAGE

9.8 A (C)	①
8.8 A	②
150 (S)	③
150.2	④
COORDINATE LOCATOR	+
DENOTES COMMON OWNER	+

SHEET INDEX

029.00	040.00	053.00	054.00	055.00

TAX MAP 041.00

TOWN OF EDINBURG
 SARATOGA COUNTY, NEW YORK
 TAXABLE STATUS DATE: March 1, 2028
 MAP EXPORTED ON: March 17, 2028