

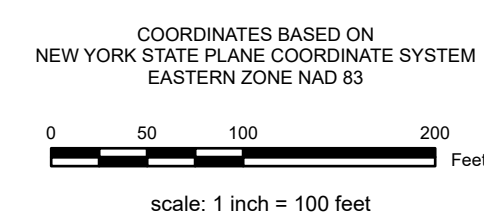
REAL PROPERTY TAX MAP

PREPARED FOR: SARATOGA COUNTY BOARD OF SUPERVISORS
 UNDER SUPERVISION OF: REAL PROPERTY TAX SERVICE AGENCY

PREPARED BY:
 L. ROBERT KIMBALL CONSULTING ENGINEERS, EDINBURG, PA (1973-1978)
 CONVERTED TO DIGITAL FORMAT BY THE L.A. GROUP SARATOGA SPRINGS, NY (1996-1998)
 CONVERTED TO DIGITAL FORMAT FROM NAD 27 TO NAD 83 BY WILDERMAPPING, INC. (2002)
 CONVERTED TO ESRI GECODATABASE FORMAT BY FOUNTAINS SPATIAL, INC. (2007-2008)

THIS MAP HAS BEEN PREPARED FROM MAPS AND DEEDS AND OTHER INFORMATION OF PUBLIC RECORD. IN ACCORDANCE WITH THE PROVISIONS OF THE REAL PROPERTY TAX LAW, FOR ASSESSMENT PURPOSES ONLY.
 IT DOES NOT REPRESENT A LAND SURVEY AND MUST NOT BE CONSTRUED AS SUCH.

DESCRIPTIONS OF REAL PROPERTY TAKEN HEREFROM FOR THE PURPOSE OF CONVEYANCE OR TRANSFER MUST BE LIMITED TO THOSE NECESSARY AND INCIDENTAL TO THE ADMINISTRATION OF THE REAL PROPERTY TAX LAW.



SPECIAL DISTRICTS

SCHOOL: EDINBURG CONSOLIDATED - 413001	LIGHT:
FIRE: FIRE PROTECTION #2 FD042	PARK:
AD:	SEWER:
LAKE:	WATER:

PROPERTY LINE	
BLOCK LIMIT	
SECTION LIMIT	
TOWN/VILLAGE/CITY	
COUNTY LINE	
RAILROAD	

GREAT LOT LINE	
SUBDIVISION LOT LINE	
STATE ROUTE	
COUNTY ROUTE	
STREET OR TOWN ROAD	

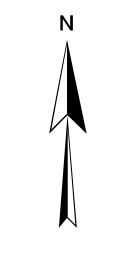
SCHOOL DISTRICT LINE	
FIRE DISTRICT LINE	
WATER DISTRICT LINE	
AGRICULTURAL DISTRICT	
LIGHT DISTRICT	
NAD 83 TIC LINES	

GREAT LOT NUMBER	
TAX MAP BLOCK NUMBER	
FILED PLAN LOT NUMBER	
TAX MAP PARCEL NUMBER	
STREAM/WATERBODY	

CALCULATED ACREAGE	
DEED ACREAGE	
SCALED DIMENSION	
DEED DIMENSION	
COORDINATE LOCATOR	
DENOTES COMMON OWNER	

054.00	054.00	055.05
054.00	054.00	055.00
054.00	054.00	055.00

SHEET INDEX



TAX MAP
TOWN OF DAY
 SARATOGA COUNTY, NEW YORK
 TAXABLE STATUS DATE: March 1, 2028 MAP EXPORTED ON: March 17, 2028

054.12