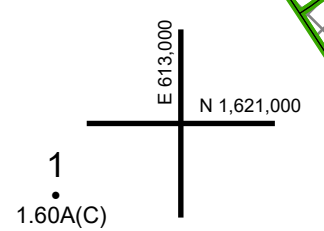


39 ROAD

Lot 40
Lot 39

042.09



ROAD

041.00

1
41.16

MATCH LINE
FOR REMAINDER
SEE 41.00
PART OF
43.00-2-1

MATCH LINE
FOR REMAINDER
SEE 42.00
PART OF
43.00-2-1

042.00

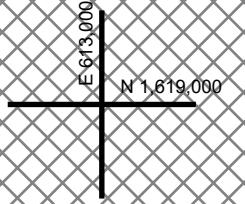
ROAD

18
2.00(A)

PART OF
43.00-2-2
FOR REMAINDER
SEE 42.00

MATCH LINE
MATCH LINE

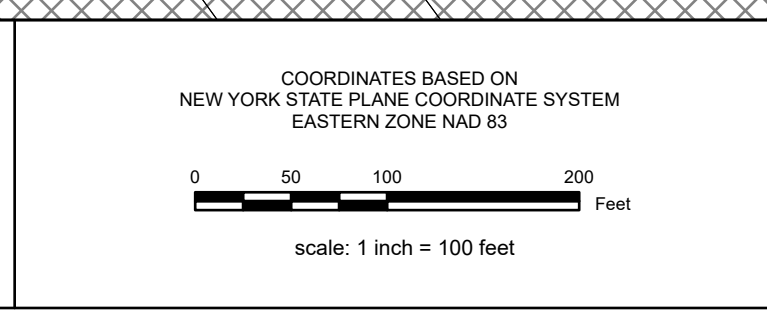
FOR REMAINDER
SEE 41.00
PART OF
43.00-2-2



Cree

REAL PROPERTY TAX MAP
SARATOGA COUNTY BOARD OF SUPERVISORS
UNDER SUPERVISION OF: REAL PROPERTY TAX SERVICE AGENCY
PREPARED BY:
L. ROBERT KIMBALL CONSULTING ENGINEERS, EBENSBURG, PA (1973-1978)
CONVERTED TO DIGITAL FORMAT BY THE L.A. GROUP SARATOGA SPRINGS, NY (1986-1998)
CONVERTED TO DIGITAL FORMAT FROM NAD 27 TO NAD 83 BY WILSON MAPPING, INC. (2002)
CONVERTED TO ESRI GECODATABASE FORMAT BY FOUNTAINS SPITAL, INC. (2007-2008)

THIS MAP HAS BEEN PREPARED FROM MAPS AND DEEDS AND OTHER INFORMATION OF PUBLIC RECORD, IN ACCORDANCE WITH THE PROVISIONS OF THE REAL PROPERTY TAX LAW, FOR ASSESSMENT PURPOSES ONLY.
IT DOES NOT REPRESENT A LAND SURVEY AND MUST NOT BE CONSTRUED AS SUCH.
DESCRIPTIONS OF REAL PROPERTY TAKEN HEREFROM FOR THE PURPOSE OF CONVEYANCE OR TRANSFER MUST BE LIMITED TO THOSE NECESSARY AND INCIDENTAL TO THE ADMINISTRATION OF THE REAL PROPERTY TAX LAW.



SPECIAL DISTRICTS

SCHOOL: EDINBURG CONSOLIDATED - 413001	LIGHT:	PROPERTY LINE:
FIRE: FIRE PROTECTION #2 - F5042	PARK:	BLOCK LIMIT:
AD:	SEWER:	SECTION LIMIT:
LAKE:	WATER:	TOWN/VILLAGE/CITY:
		COUNTY LINE:
		RAILROAD:

LEGEND

GREAT LOT LINE: [Symbol]	SCHOOL DISTRICT LINE: [Symbol]	GREAT LOT NUMBER: [Symbol]
SUBDIVISION LOT LINE: [Symbol]	FIRE DISTRICT LINE: [Symbol]	TAX MAP BLOCK NUMBER: [Symbol]
STATE ROUTE: [Symbol]	WATER DISTRICT LINE: [Symbol]	FILED PLAN LOT NUMBER: [Symbol]
COUNTY ROUTE: [Symbol]	AGRICULTURAL DISTRICT: [Symbol]	TAX MAP PARCEL NUMBER: [Symbol]
STREET OR TOWN ROAD: [Symbol]	LIGHT DISTRICT: [Symbol]	STREAM/WATERBODY: [Symbol]
MAIN ST: [Symbol]	NAD 83 TIC LINES: [Symbol]	DENOTES COMMON OWNER: [Symbol]

COLOCATED ACRESAGE

041.00	041.00	042.09
041.00	041.20	042.00

SHEET INDEX

041.00	041.00	042.09
041.00	041.20	042.00

TAX MAP

041.00	041.00	042.09
041.00	041.20	042.00

TOWN OF DAY
SARATOGA COUNTY, NEW YORK
TAXABLE STATUS DATE: March 1, 2028
MAP EXPORTED ON: March 17, 2028
041.16