

REAL PROPERTY TAX MAP

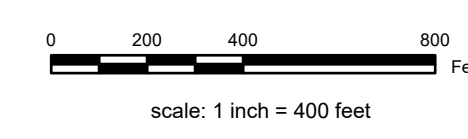
PREPARED FOR: SARATOGA COUNTY BOARD OF SUPERVISORS
 UNDER SUPERVISION OF: REAL PROPERTY TAX SERVICE AGENCY

PREPARED BY:
 L. ROBERT KIMBALL CONSULTING ENGINEERS, ERIENSBURG, PA (1973-1978)
 CONVERTED TO DIGITAL FORMAT BY THE L.A. GROUP, SARATOGA SPRINGS, NY (1998-1999)
 CONVERTED TO DIGITAL FORMAT FROM NAD 27 TO NAD 83 BY WILHELM KAPPLING, INC. (2003)
 CONVERTED TO ESRI GECODATABASE FORMAT BY FOUNTAINS SPITAL, INC. (2007-2008)

THIS MAP HAS BEEN PREPARED FROM MAPS AND DEEDS AND OTHER INFORMATION OF PUBLIC RECORD, IN ACCORDANCE WITH THE PROVISIONS OF THE REAL PROPERTY TAX LAW, FOR ASSESSMENT PURPOSES ONLY.
 IT DOES NOT REPRESENT A LAND SURVEY AND MUST NOT BE CONSTRUED AS SUCH.

DESCRIPTIONS OF REAL PROPERTY TAKEN HEREFROM FOR THE PURPOSE OF CONVEYANCE OR TRANSFER, MUST BE LIMITED TO THOSE NECESSARY AND INCIDENTAL TO THE ADMINISTRATION OF THE REAL PROPERTY TAX LAW.

COORDINATES BASED ON
 NEW YORK STATE PLANE COORDINATE SYSTEM
 EASTERN ZONE NAD 83



SPECIAL DISTRICTS

SCHOOL: HADLEY LUTHERAN CENTRAL, 52301	LIGHT:
FIRE: FIRE PROTECTION #1, 15041	PARK:
AD:	SEWER:
LAKE:	WATER:

PROPERTY LINE

BLOCK LIMIT	GREAT LOT LINE
SECTION LIMIT	SUBDIVISION LOT LINE
TOWN VILLAGE CITY	STATE ROUTE
COUNTY LINE	COUNTY ROUTE
RAILROAD	STREET OR TOWN ROAD

LEGEND

SCHOOL DISTRICT LINE	TAX MAP BLOCK NUMBER	CALCULATED ACREAGE
FIRE DISTRICT LINE	FILED PLAN LOT NUMBER	DEED ACREAGE
WATER DISTRICT LINE	TAX MAP PARCEL NUMBER	SCALED DIMENSION
AGRICULTURAL DISTRICT	STREAMWATERBODY	DEED DIMENSION
LIGHT DISTRICT		COORDINATE LOCATOR
NAD 83 TIC LINES		DENOTES COMMON OWNER

TOWN OF DAY

024.00	025.00	
032.00		
043.00	044.00	

SHEET INDEX

TAX MAP 033.00

TOWN OF DAY
SARATOGA COUNTY, NEW YORK
 TAXABLE STATUS DATE: March 1, 2028
 MAP EXPORTED ON: March 17, 2028