

WARREN

COUNTY

HUDSON

RIVER

HUDSON

RIVER

VILLAGE OF CORINTH

Village of Corinth
Sewage Treatment Plant
9
4.41(A)(C)

International Paper Company Inc.
8
50.71(A)(C)

60.78

V060.79

1

V060.77

V074.21
ALLEY

ALLEY

V074.22

WHITE STREET

STREET

STREET

WHITE STREET

STREET

VILLAGE OF CORINTH

074.00

074.00

REAL PROPERTY TAX MAP

PREPARED FOR: SARATOGA COUNTY BOARD OF SUPERVISORS
UNDER SUPERVISION OF: REAL PROPERTY TAX SERVICE AGENCY

PREPARED BY:
L. ROBERT KIMBALL CONSULTING ENGINEERS, EBENSBURG, PA (1973-1978)
CONVERTED TO DIGITAL FORMAT BY THE L.A. GROUP SARATOGA SPRINGS, NY (1986-1998)
CONVERTED TO DIGITAL FORMAT FROM NAD 27 TO NAD 83 BY WIELER MAPPING, INC. (2002)
CONVERTED TO ESRI GEDATABASE FORMAT BY FOUNTAINS SPATIAL, INC. (2007-2008)

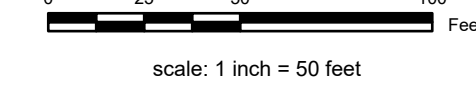
THIS MAP HAS BEEN PREPARED FROM MAPS AND DEEDS AND OTHER INFORMATION OF PUBLIC RECORD. IN ACCORDANCE WITH THE PROVISIONS OF THE REAL PROPERTY TAX LAW, FOR ASSESSMENT PURPOSES ONLY.

IT DOES NOT REPRESENT A LAND SURVEY AND MUST NOT BE CONSTRUED AS SUCH.

DESCRIPTIONS OF REAL PROPERTY TAKEN HEREFROM FOR THE PURPOSE OF CONVEYANCE OR TRANSFER, MUST BE LIMITED TO THOSE NECESSARY AND INCIDENTAL TO THE ADMINISTRATION OF THE REAL PROPERTY TAX LAW.

COORDINATES BASED ON NEW YORK STATE PLANE COORDINATE SYSTEM EASTERN ZONE NAD 83

scale: 1 inch = 50 feet



SPECIAL DISTRICTS

AG:	LIGHT:
FIRE:	LAKE:
SCHOOL: CORINTH CENTRAL 41265	SEWER:
WATER:	PARK:

PROPERTY LINE	GREAT LOT LINE
BLOCK LIMIT	SUBDIVISION LOT LINE
SECTION LIMIT	STATE ROUTE
TOWN/VILLAGE/CITY	COUNTY ROUTE
COUNTY LINE	STREET OR TOWN ROAD
RAILROAD	MAIN ST

LEGEND

SCHOOL DISTRICT LINE	WATER DISTRICT LINE
FIRE DISTRICT LINE	AGRICULTURAL DISTRICT
WATER DISTRICT LINE	LIGHT DISTRICT
AGRICULTURAL DISTRICT	NAD 83 TIC LINES
LIGHT DISTRICT	
NAD 83 TIC LINES	

GREAT LOT NUMBER	9.8 A (C)
TAX MAP BLOCK NUMBER	9.8 A
FILED PLAN LOT NUMBER	150 (S)
TAX MAP PARCEL NUMBER	150.2
STREAM/WATERBODY	160.00-3.9
STREAM/WATERBODY	

CALCULATED ACRES	9.8 A (C)
DEED ACRES	9.8 A
SCALED DIMENSION	150 (S)
DEED DIMENSION	150.2
COORDINATE LOCATOR	
IDENTIFIES COMMON OWNER	

V060.77	V060.79
074.00	074.00
074.00	074.00

SHEET INDEX



TAX MAP
VILLAGE OF CORINTH
SARATOGA COUNTY, NEW YORK

V060.78

TAXABLE STATUS DATE: March 1, 2025 MAP EXPORTED ON: March 10, 2025