

Hunt

Lake

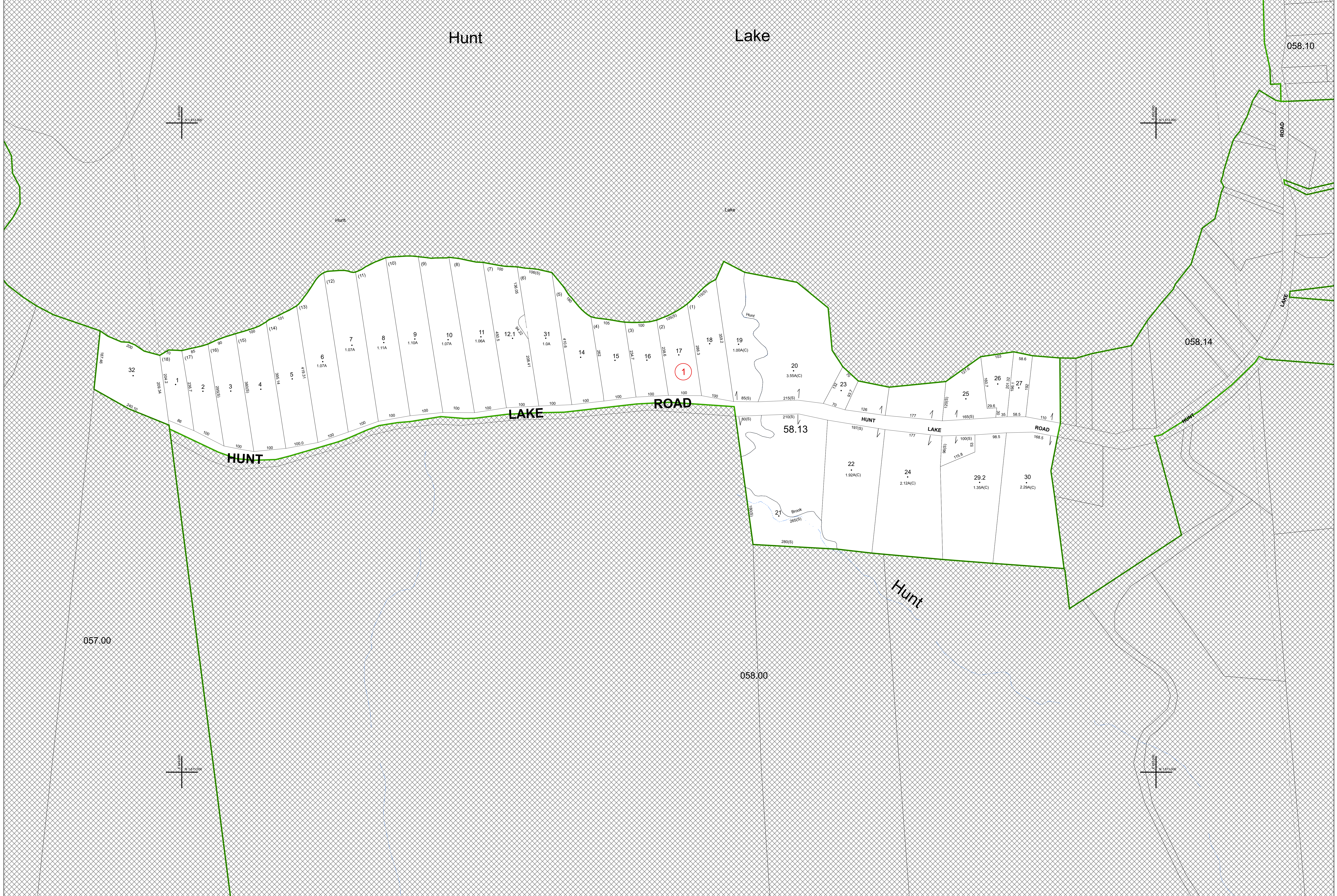
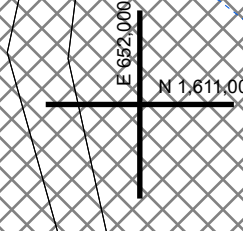
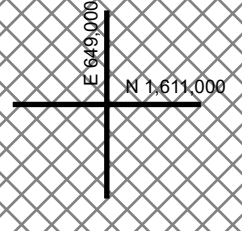
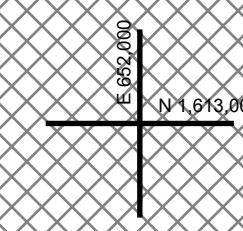
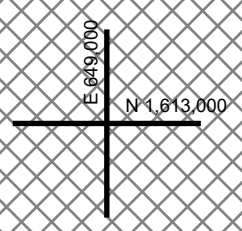
058.10

058.14

057.00

058.00

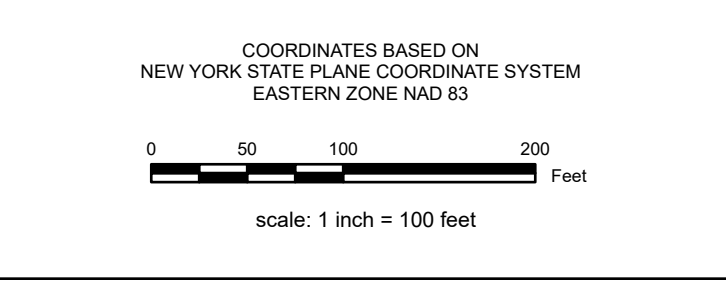
058.13



REAL PROPERTY TAX MAP
 PREPARED FOR: SARATOGA COUNTY BOARD OF SUPERVISORS
 UNDER SUPERVISION OF: REAL PROPERTY TAX SERVICE AGENCY

PREPARED BY:
 L. ROBERT KIMBALL CONSULTING ENGINEERS, EBENSBURG, PA (1973-1978)
 CONVERTED TO DIGITAL FORMAT BY THE L.A. GROUP SARATOGA SPRINGS, NY (1996-1998)
 CONVERTED TO DIGITAL FORMAT FROM NAD 27 TO NAD 83 BY NEILES MAPPING, INC. (2003)
 CONVERTED TO ESRI GEDATABASE FORMAT BY FOUNTAINS SPATIAL, INC. (2007-2008)

THIS MAP HAS BEEN PREPARED FROM MAPS AND DEEDS AND OTHER INFORMATION OF PUBLIC RECORD. IN ACCORDANCE WITH THE PROVISIONS OF THE REAL PROPERTY TAX LAW, FOR ASSESSMENT PURPOSES ONLY.
 IT DOES NOT REPRESENT A LAND SURVEY AND MUST NOT BE CONSTRUED AS SUCH.
 DESCRIPTIONS OF REAL PROPERTY TAKEN HEREFROM FOR THE PURPOSE OF CONVEYANCE OR TRANSFER, MUST BE LIMITED TO THOSE NECESSARY AND INCIDENTAL TO THE ADMINISTRATION OF THE REAL PROPERTY TAX LAW.



| SPECIAL DISTRICTS | |
|---|---------------|
| AG: | LIGHT: |
| FIRE: COUNTY FIRE PROTECTION - F0018 | LAKE: |
| SCHOOL: COUNTY CENTRAL - 41265 | SEWER: |
| WATER: | PARK: |

| | |
|-------------------|----------------------|
| PROPERTY LINE | GREAT LOT LINE |
| BLOCK LIMIT | SUBDIVISION LOT LINE |
| SECTION LIMIT | STATE ROUTE |
| TOWN/VILLAGE/CITY | COUNTY ROUTE |
| COUNTY LINE | STREET OR TOWN ROAD |
| RAILROAD | MAIN ST |

| LEGEND | |
|-----------------------|-----------------------|
| SCHOOL DISTRICT LINE | GREAT LOT NUMBER |
| FIRE DISTRICT LINE | TAX MAP BLOCK NUMBER |
| WATER DISTRICT LINE | FILED PLAN LOT NUMBER |
| AGRICULTURAL DISTRICT | TAX MAP PARCEL NUMBER |
| LIGHT DISTRICT | STREAM/WATERBODY |
| NAD 83 TIC LINES | |

| | |
|-------------------------|-----------|
| CALCULATED ACREAGE | 9.8 A (C) |
| DEED ACREAGE | 9.1 A |
| SCALED DIMENSION | 150 (S) |
| DEED DIMENSION | 150.2 |
| COORDINATE LOCATOR | |
| IDENTIFIES COMMON OWNER | |

| SHEET INDEX | | |
|-------------|--------|--------|
| 057.00 | 058.00 | 058.00 |
| 057.00 | 058.14 | 058.14 |
| 057.00 | 058.00 | 058.00 |

TAX MAP **058.13**

TOWN OF CORINTH

SARATOGA COUNTY, NEW YORK

TAXABLE STATUS DATE: March 1, 2028 MAP EXPORTED ON: March 10, 2028